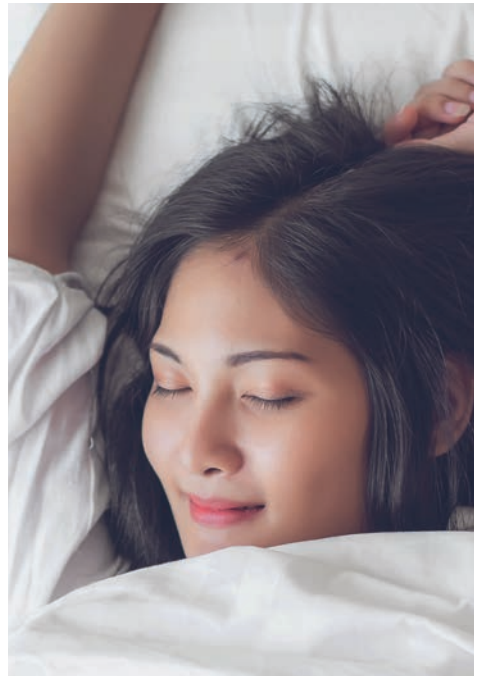




NATUZZI EDITIONS
dreams



We are all dreamers.
And we are here to choose
the substance of our dreams.
Comfort, innovation,
Italian quality,
design, craftsmanship. Each of
these beds is the stuff
of wonderful, passionate dreams.



DREAMS ACCORDING TO NATUZZI.

For Natuzzi Editions every dream has a before and after. Before we can dream we have to choose the best raw materials, the most skilled and adept craftsmen, the brightest ideas of our designers. In every product there is the day-to-day work of those who develop, produce, organise and fine-tune. We have been creating dreams in this way for over 60 years. Keeping our eyes open. So you can close yours every night in total comfort and wellbeing.

DESIGN



We never begin any project without a pencil in our hands and an idea in our minds. There is always a thought, a design, behind every self-respecting project. Taking this as their starting point, the Natuzzi Style Centre designers then envisage the containers of our dreams, the beds.

CREATE



What is the value of a handmade product? The traces of the work of our master craftsmen enrich the surfaces of every product. With value, experience, expertise, originality. Thanks to their hands, every bed is unique.

GUARANTEE



We monitor the entire work process right along the production chain, subjecting every product to many stringent tests, doing everything we can to guarantee you the very best. In this way Natuzzi Editions guarantees the utmost quality, ensuring your sleep lives up to your dreams.

WELCOME



Entering our stores is a bit like coming home. We were born in Puglia and we know just how to make people feel welcome, even in a shop. Behind our smiles there is the confidence of a company that believes in the quality of its products, its expertise, its professionalism and flexibility. Come whenever you like.

CERTIFY



When Natuzzi chooses its raw materials, the leather, fabric, wood and polyurethane that will make your nights so comfortable, it does so in a sustainable way. A commitment that we make to you and to the environment around us. And one that is reiterated in our quality and sustainability certificates.

BE

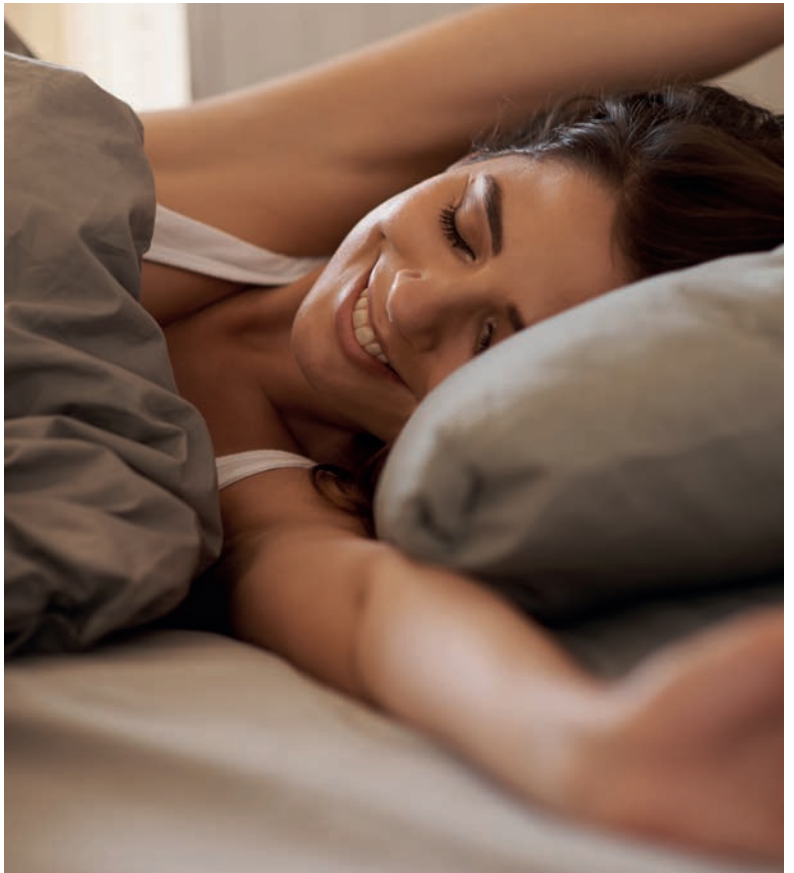


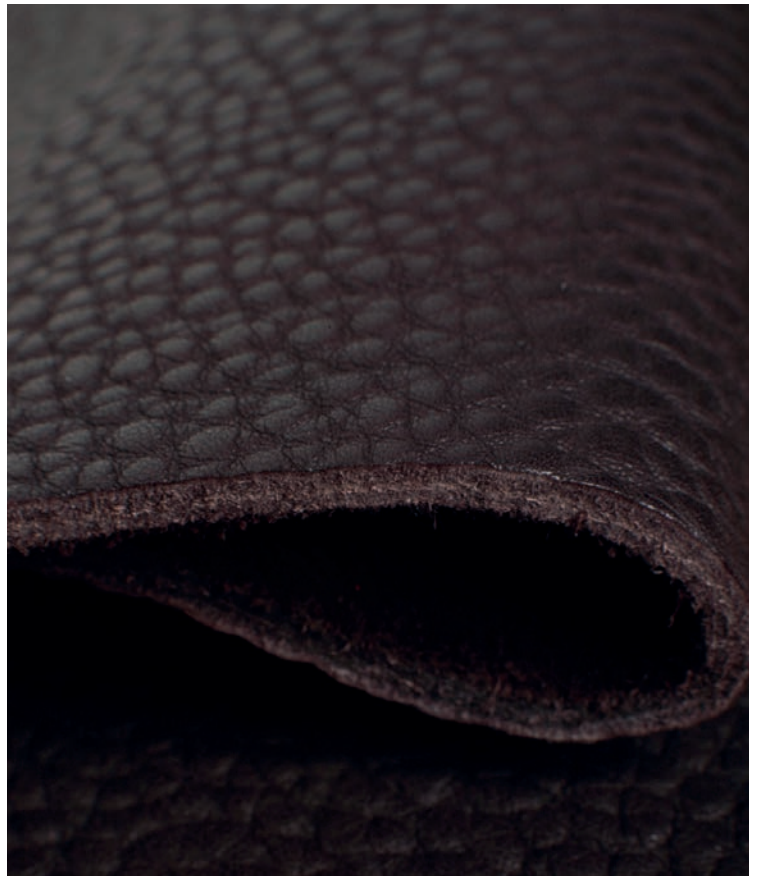
What does it mean to be Natuzzi? It is always difficult to talk about oneself but of one thing we are sure. We offer a complete experience, from dream to realisation, choice to delivery. In the middle of all this there is our story of Italian innovation, the stuff of dreams.

CLOSE YOUR EYES

And relax. We'll take care of all the rest; in fact, we have been taking of all the rest since 1959. We want to give people the beds they have always dreamed of. This is the bespoke comfort of Natuzzi Editions, a bed tailored to the needs of the user. Designs with bewitching forms, headboards furnished with fine materials: the perfect place to collect your thoughts at the end of the day. The feet appear or disappear in the most exclusive finishes and the functions offer different options for

containing or giving more space to different lifestyles. The fabric or leather covers can be removed to showcase your personality or to wash off the chocolate stains left by little hands while enjoying breakfast in bed. Then there is the mattress, a breathable, ergonomic and comfortable cloud that supports the body so you can sleep even more soundly. To you who dream the most diverse of dreams, we dedicate unique beds that feel right at home in your intimate night-time space because they are just like you.

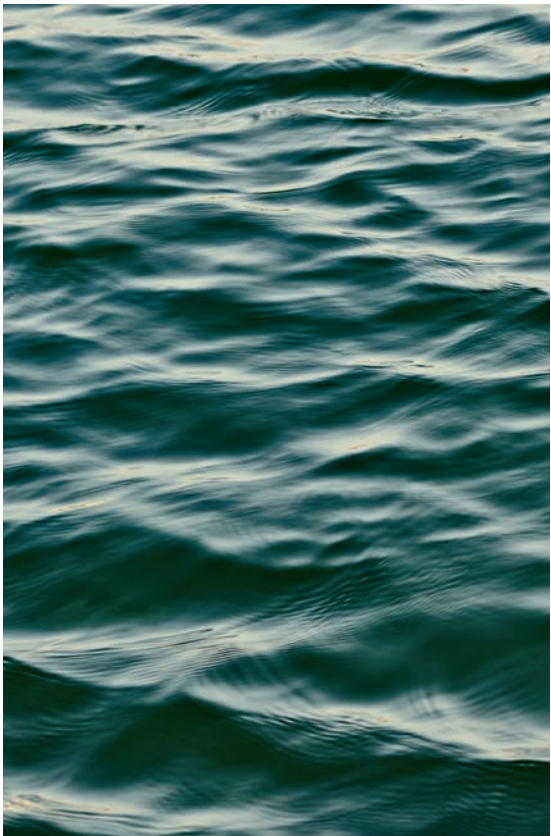




INTERNATIONAL OUTLOOK

Sixty years ago we were a little artisan workshop of people who were passionate about a project. Today we are a story: about a family, about design, about challenges. And about a vision, one that began in Puglia but which has now expanded across the world, driven by the power of design and innovation. Design as a meeting of idea and functionality, designer and brand. A meeting that expands our horizons to take in new trends and new conceptions of comfort and style. Innovation is what

drives us and our products, giving them dynamism, expanding their functions and making them suitable for contemporary spaces. The Italian mood, where the art of living meets beauty, permeates our heritage, characterises our contemporary pieces, our icons, our experiments. The little workshop where great masters made their unique pieces and custom products by hand lives on in our hearts. Always people-oriented, but now with an international outlook.



WITH ALL OUR RESPECT

Being a big company is also a question of respect. The respect that Natuzzi shows first and foremost for its people, those who help to achieve our business goals on a daily basis, for its customers, who choose us and put their trust in us, and last but not least for the environment. A serious, tangible and certified commitment. To guarantee compliance with international standards and the expectations of the end customer we have obtained ISO

9001 Quality Certification. To monitor the environmental impact of our activities we have ISO 14001 Environmental Certification, while our ISO 45001 Certification underlines our commitment to ensuring the health and safety of our employees in the workplace. We use the renewable energy produced by 21,000 photovoltaic modules to reduce our CO2 emissions and with FSC certification we guarantee that our wood comes from sustainable forests. Finally, the polyurethane used in our padding is Ecoflex, i.e. free of freon and other harmful substances.



NATUZZI EDITIONS

BED

/bed/

1. The perfect refuge from monsters. 2. Where George Clooney kissed me for the first time. 3. Herbal tea, biscuits and the weekend.



LEATHER OR FABRIC



STORAGE COMPARTMENT



*Lots of colours in
leather or fabric.
Resistance is futile!*

/ LETTI /

LUNARE

LUNARE BED in fabric (L230xD224xH107/132).

*Spacious outside,
capacious inside.*



One of the optional features is a large storage compartment with a two-position opening mechanism: the first position makes it easy to remake the bed, while the second is for replacing objects and bed linen.



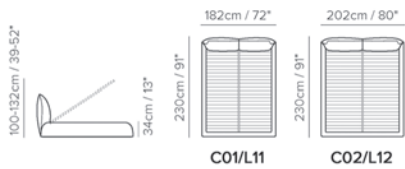


Visual comfort transposed from the sofa to the bed. This is a bed that immediately invites you to relax. Everything about this bed, designed by Claudio Bellini for the Natuzzi Editions bedroom collection, is soft.



/ LETTI /

CHOOSE YOUR LUNARE



FIND YOUR NEAREST STORE AT [NATUZZIEDITONS.COM](https://www.natuzzi.com)



*A headboard that doesn't
go unnoticed! Hats off!*



LEATHER OR FABRIC



GALATTICO

GALATTICO BED in leather (L184 - P232- H108). Also available in the size (L204 - P232 - H108) in leather and fabric and a combination of the two.. **FELICITA' ARMCHAIR** in fabric (H-78 - W77 - D84). Available in a wide range of leathers and fabrics in many colors. **ASTRA FLOOR LAMP** metal frame in pewter color and lampshade in white opal glass (Ø45-H165). Available also with white frame. **LILLY RUG** sage/beige (173x274). Also available blue/grey. **COMO BEDSIDE TABLE** (P50 - L50cm - H45cm) frame in champagne-colored curved metal, drawers in brown ash and ceramic arabescato statuario effect top. Ceramic marble-effect top.

The elegant manufacturing of the headboard is a triumph of experienced craftsmanship.



*Close your eyes and...
Galactic dreams.*



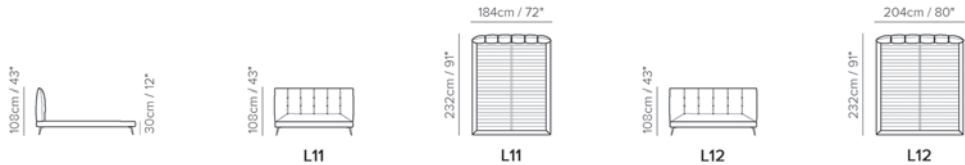


The bright metal feet in different finishes add a vintage touch to the design.



/ LETTI /

CHOOSE YOUR GALATTICO



FIND YOUR NEAREST STORE AT [NATUZZIEDITIONS.COM](https://www.natuzzi.com)



LEATHER OR FABRIC



STORAGE COMPARTMENT



ORBITALE

ORBITALE BED in leather (H99 - L184 - D232). Available in 4 sizes.

*Simple
and sophisticated.*



A contemporary design that boasts true comfort. Orbitale is a bed with a soft, welcoming look, designed by Claudio Bellini for the Natuzzi Editions bedroom collection. It is the result of a great research and design process focused on providing genuine ergonomics during relaxation.



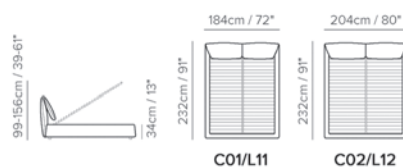


One of the optional features is a large storage compartment with a two-position opening mechanism: the first position makes it easy to remake the bed, while the second is for replacing objects and bed linen.



/ LETTI /

CHOOSE YOUR ORBITALE



FIND YOUR NEAREST STORE AT [NATUZZIEDITONS.COM](https://www.natuzzieditions.com)



*Large cushions,
a declaration
of extreme comfort.*



LEATHER OR FABRIC



CUT

CUT BED in fabric (L169-P230-H108) in leather or fabric and a combination of the two. **WHISPER RUG** vintage platinum (L200 - P300 cm). **COMO BEDSIDE TABLE** (P50 - L50cm - H45cm) frame in champagne-colored curved metal, drawers in brown ash and ceramic arabescato statuario effect top. Ceramic marble-effect top. **COMO SIDEBBOARD** (L 200 - P50 - H45cm) frame in champagne-colored curved metal, drawers in brown ash and ceramic arabescato statuario effect top. Ceramic marble-effect top. **VASE OBJECTS** white and gold (L19,5 - H 34cm) (L24,5 - H 38cm). Circo mirror. Rhea bed linen. Shanghai vase.

The various sizes available make it perfectly adaptable to any type of bedroom and spaces with vastly differing needs.



NATUZZI EDITIONS

*Comfortable
as the freedom
to choose between
leather or fabric.*



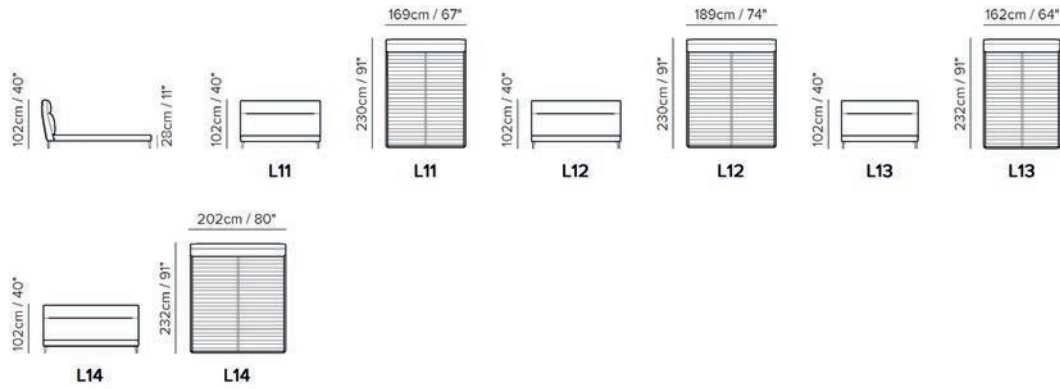


Cut is a bed with a simple appearance, but at the same time soft and enveloping: the thin metal feet enhance its lightness.



/ LETTI /

CHOOSE YOUR CUT



FIND YOUR NEAREST STORE AT [NATUZZIEDITIONS.COM](https://www.natuzzi.com)

*The timeless appeal
of the capitonné technique.*



LEATHER OR FABRIC



STORAGE COMPARTMENT



STONE

STONE BED in leather (L182-P238cm) in leather or fabric. **DESY BEDSIDE TABLES** in brown ash finish with powder coated steel structure in anthracite finish. **WHISPER RUG** Moonlight Blue (P 250 - L 300 cm). Available in other dimensions and colors. **BAG pendant LAMPS** in bronze color (L 21cm - H 20cm). Also available in white. Sandglass ball Sand S. Tethys bed linen. **TEPORE PLAID** Tartan Blue/taupe.

*Perfect
in any bedroom
with its
various sizes.*



The soft and sinuous lines, the headboard made using the traditional technique, and the feet in solid wood make Stone a bed with a truly classic, contemporary look.



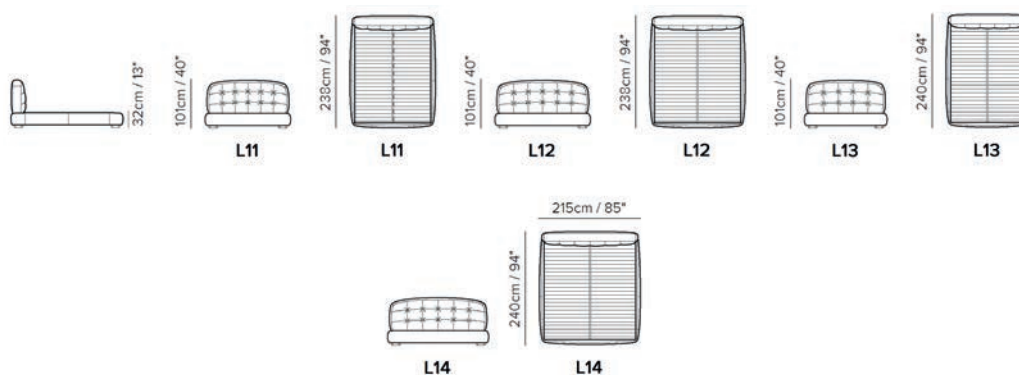


This bed is characterised by its high-level functionality: the base can in fact be lifted or lowered (+/- 5cm) to maintain alignment with the frame depending on the selected mattress.



/ LETTI /

CHOOSE YOUR STONE



FIND YOUR NEAREST STORE AT [NATUZZIEDITONS.COM](https://www.natuzzi.com)



*A soft white cloud
has floated into the bedroom.*



LEATHER OR FABRIC



KARTUN

KARTUN bed (L179-D229-H101) available in four sizes. **BAG lamp** (D 32 W 35 H 21 cm), bronze colour. **WHISPER RUG** light taupe colour (D 250 - W 300 cm). Also available in different dimensions and colours.

The Kartun immediately catches the eye for its geometrical forms and symmetrical lines.



*Geometrical
and symmetrical.
Giving form
to your dreams.*

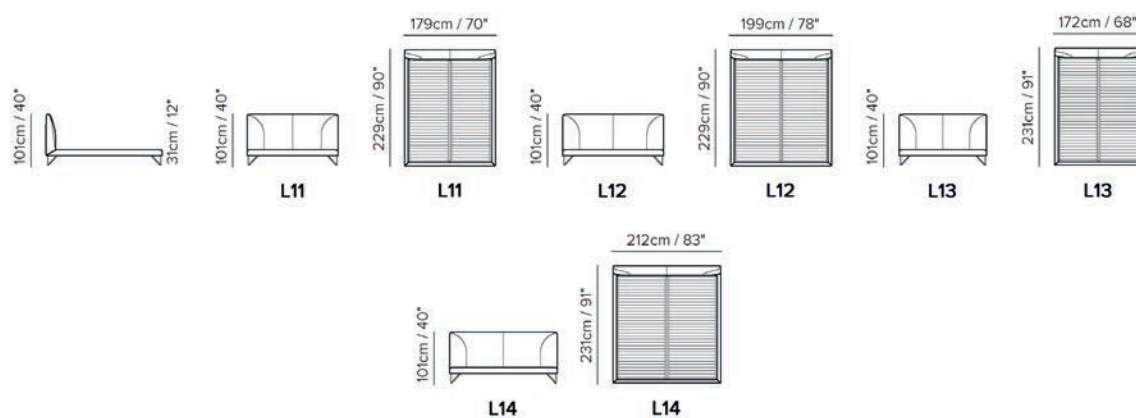




The particular metal feet lighten the design, giving it additional dynamism.



CHOOSE YOUR STONE



FIND YOUR NEAREST STORE AT [NATUZZIEDITIONS.COM](https://www.natuzzi.com)



LEATHER OR FABRIC



*A floating look
for great comfort.*



MORFEO

MORFEO bed (L181-D237-H104) available in four sizes. **WHISPER RUG** light taupe colour (D 250 - W 300 cm). Also available in different dimensions and colours. **BAG pendant LAMP** in white (L 21cm - H 20cm). Also available in white. **PEPE** round accent in fumè glass (40 cm H 51 cm). **BENCH** (L169-D51-H56) available in leather and fabric, black metal frame, also available in white.

Romantic design.



Morfeo is clearly inspired by the typical and well-expressed forms of early 20th century Western modernism: for all intents and purposes, the starting point of what would become the contemporary style par excellence, which over the decades we too have come to enjoy.



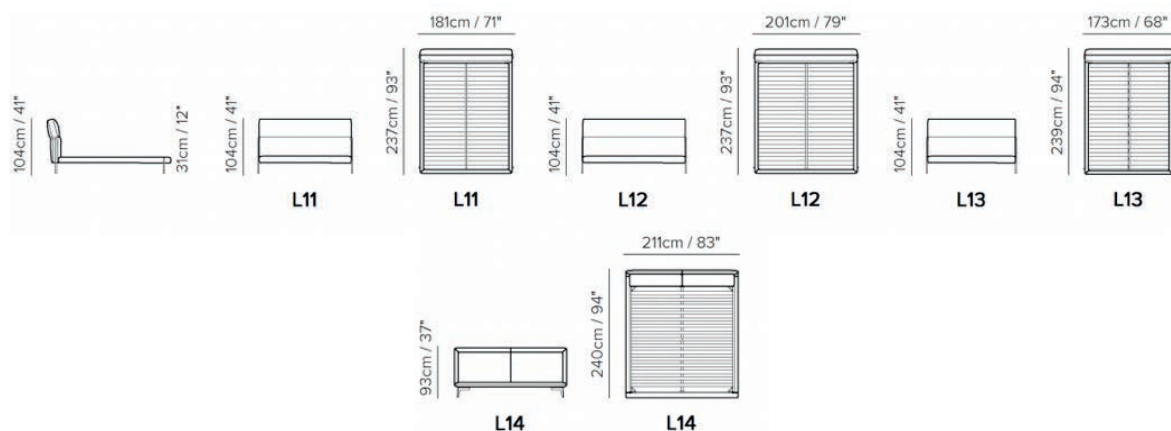


The upholstered bed, which at first glance appears meticulous, in truth conceals incredible softness underlined precisely by the compression of the support structure in metal tubing.



/ LETTI /

CHOOSE YOUR STONE



FIND YOUR NEAREST STORE AT [NATUZZIEDITIONS.COM](https://natuzzi.com)



LEATHER OR FABRIC



GIUNCA

GIUNCA bed (L178-D238-H93) available in 4 other sizes in leather and fabric. **NORMA** suspension **LAMP** (Ø22-H40 cm). **SLANCIO** side table in blond ash top and black lacquered metal feet with bronze lower leg; (D60 - H53). **WHISPER RUG** light taupe colour (D 250 - W 300 cm). Also available in different dimensions and colours.

The structure of the 2- or 3-masted sails on the other hand, consists in geometric lines with cross-cut panels. These same taut lines are featured in the bed design, distinguished by a horizontal base accentuated further in as if to recall the hub of boats, while the bulging vertical headboard portrays a sense of “wind-filled sails”.



Like
"wind-filled sails"



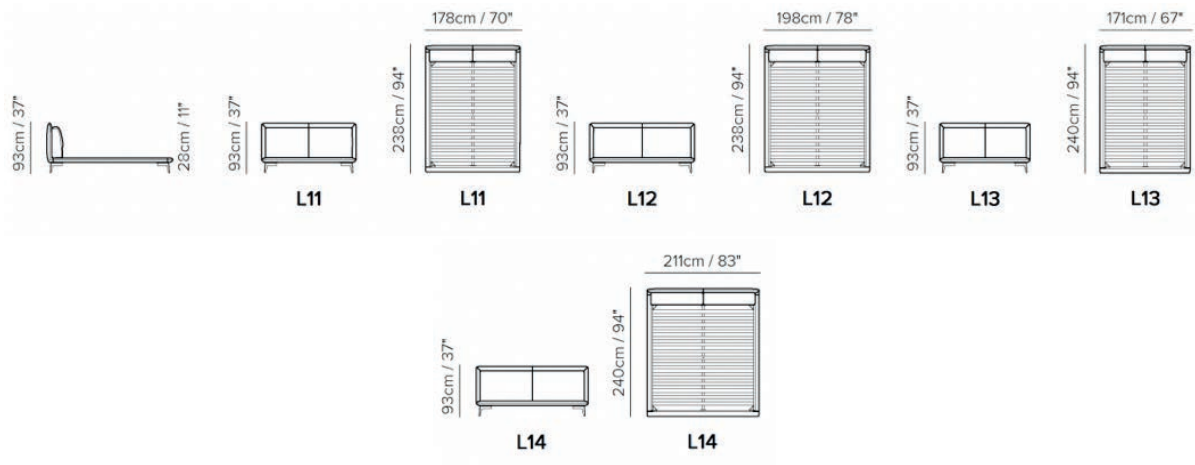


The delicate feet, in contrast with the overlying structure, make everything appear to be almost “floating”.



/ BEDS /

CHOOSE YOUR STONE



FIND YOUR NEAREST STORE AT [NATUZZIEDITIONS.COM](https://www.natuzzi.com)

Concept, Art Direction, Copywriting
Natuzzi Creative Lab

3D Art
Bieffe Render
Katia Tartaglia
Suprema Unlimited Reality

Photographers
Francesco Baggetto
Flavio & Frank
Studio Tartaglione

Post Production
Alessandro Pilla, Alberto Castagnino

Copyright © Natuzzi S.p.A 2022.
All rights reserved.

The product descriptions and designs in this catalogue are purely illustrative. All efforts have been made to ensure the colours and finishes are as faithful as possible to those of the real products. Nevertheless, we cannot guarantee perfect correspondence. In fact, the representation of the colours is limited and may vary according to print settings. Natuzzi S.p.A. reserves the right to make any price, aesthetic and/or functional and/or structural changes or variations it deems necessary to the products without any prior notice and the moment such changes are required for commercial or production purposes. Natuzzi S.p.A. shall not be held responsible for any printing errors or omissions. Copyright © Natuzzi S.p.A 2022. All rights reserved. The unauthorised reproduction, in whole or in part, copying, distribution, modification or use (in any way) of the content of this document is strictly prohibited.



Crafted for Humans