

Our roots lie deep in a land where beauty has been created and harvested for thousands of years, day upon day, season after season, as if it were a fruit. And today we offer that very same beauty to the whole world. And that fruit is harmony, with its unique flavour, capturing the Mediterranean, its civilisation and its way of life - one that is unsurpassed to this day.

Paolo Roversi

N



Tony Chambers is a Creative Director, Design Consultant and Editor. He is the founder of multidisciplinary creative agency TC & Friends and Co-Chair of Brainstorm Design, Fortune magazine's design & business conference. Tony is the editor and creative director of the definitive monograph of designer Paul Smith, published by Phaidon. He sits on the board of the Barbican Art Centre and the Whitechapel Galleries Ventures board. From 2003 to 2018 Tony served as Editor-in-Chief and Creative Director of Wallpaper* magazine, for which he still contributes. He also served as Art Director of British GQ and Art Editor of The Sunday Times Magazine. He has twice been named the PPA Designer of Year and twice Editor of the Year by the BSME. In 2015 he was the recipient of the Mark Boxer Award for outstanding services to the Publishing Industry – the most prestigious honour in British publishing.

It's a great pleasure to introduce the 2021 Natuzzi catalogue. During my many years at the helm of Wallpaper* magazine, the transformation in the positioning of Natuzzi as a brand stands out as one of the most interesting and brightest moments.

Natuzzi is a brand that oozes style, passion and authenticity. A design brand that is unique in its outlook and unique in its output and this is due to one main reason – the passion and dedication of the owners – the Natuzzi family.

All great brands are sustained in some way by their history. By their story. And what a great story there is behind Natuzzi. I know it well because it was told to me a few years ago by Chief creative officer Pasquale Junior and one image has stayed with me since. That of his father, the Founder and CEO, setting off from Apulia on a journey of discovery across America in the early 80s at a time when he spoke very little, if any, English. Driven by a mix of ambition, curiosity and bravery, Pasquale worked his way through the many huge furniture fairs, trade shows and show rooms and was struck by a distinct lack of variety, colour and flair. He was convinced that the World would love what Natuzzi could offer.

Fast forward to today and it is clear that Pasquale Junior has inherited that same passion, curiosity and drive. In the short time I have known him he has transformed this hugely successful furniture maker into the hugely successful directional lifestyle brand we see presented so exquisitely across the pages of this catalogue.

It is a collection that speaks of harmony and a blend of design influences. It is international in flavour but still very much rooted in the culture and values of Apulia. Produced by designers with very different approaches and experiences – it is indeed a special blend.

It is all about the harmonious blending of tradition with modernity. The blending of craftsmanship with innovation, of form with function, sustainability with glamour, and comfort with style. This entire collection highlights Natuzzi's great propensity for innovation, which is a key cornerstone of the brand, while remaining faithful to tradition and to its own roots. It demonstrates and displays the vast know-how of Natuzzi craftsmen and their ability to develop complex and varied projects with great skill and sophistication.

For me, it also exemplifies a blending of Natuzzi's rich past, present and future. And on this evidence, the future looks really exciting.

Tony Chambers

index

- 6 **natuzzi knows how**
- 12 **natuzzi and its designers.
evolving harmony.**
- 14 **natuzzi from a to z**
- 16 **living**
harmony comes from change.
- 230 **dining**
the harmony of new
everyday habits.
- 264 **bedroom**
harmony, a dream
that comes true.
 - 286 sleeping
in natural harmony
 - 288 a soft, warm, silky
embrace
- 290 **the place of harmony**
- 292 **soul and matter**
- 300 **technical specifications**
 - 303 sofas
 - 337 sofa beds
 - 338 armchairs
 - 347 ottomans and benches
 - 349 chairs
 - 352 beds
 - 354 coffee tables
 - 367 tables
 - 371 bookcases
 - 372 sideboards
 - 375 bedroom furnishings
 - 378 rugs
 - 382 lamps
 - 386 mirrors
 - 387 blankets and cushions
 - 387 accessories
 - 391 room fragrances
 - 392 wallpapers



natuzzi knows how

Creating value for everyone while respecting everyone.

A foray into the ethics of harmony.

The pursuit of harmony – in design and life in general – is the dream that has shaped our actions since as far back as 1959. Harmony in the sense of the right balance between body and mind, mankind and nature, and between different peoples and culture; a means to enrich and complete one another, just as has been happening for thousands of years not only in our “Mother Land” – Apulia – but also all over the Mediterranean where a perpetual intermingling has generated boundless beauty and a lifestyle that continues to be an inspiration for many. One that is unrivalled still today in many different ways. With all of this in mind and without betraying its own DNA, Natuzzi Italia decided to carry over this sense of harmony into the world of interior décor, bridging the gap between a contemporary aesthetic and functionality, materials and colours, and between textures and graphic designs in a quest to create spaces and dwellings which emanate balance, elegance and beauty from every pore. Harmoniousness which is underpinned by aesthetic research and anchored by unassailable deeply rooted values –

ethics, transparency and sustainability. And in order to ensure that these values are respected and that quality standards exceed customer expectations, Natuzzi Italia has chosen to control the whole production chain, right the way down to actual delivery. A hub of international excellence and experience, the Natuzzi Style Center lies at the heart of everything. Every day designers, décor experts and colourists study and analyse what is happening in the aesthetic world (a combination of art, fashion and design) and how it is evolving – new forms, trends, colours, nuances, finishes and textures. All of this information is then used to create environments in which each single piece (from the sofa to the furnishing accessories, right down to decorative objects) mingle and coalesce into a cohesive space which exudes harmony. At this stage, the concept goes to the prototype centre where Natuzzi Italia’s immense know-how comes to the fore. Because although it is the designer with his pencil on a sheet of blank paper who first sketches out an idea (and this is the stage of pure creativity),



But, most of all, it has grown the concept of comfort which has always been the basis of Natuzzi's style. It has combined fine Italian craftsmanship and the most advanced technology in the lounging sector to accomplish its goals (ample proof of this is provided by Re-vive, the first armchair in the world that automatically adapts to the way you sit). Being able to rely on one of the most advanced quality-testing laboratories in the world, Natuzzi is also able to certify all these innovative features. Because it is not only sofas and armchairs that are made on Natuzzi's premises in Italy, it is their accompanying certificates as well.

And, at this point, our acknowledgement of Italy's particular vocation for beauty and quality merges with our immense gratitude for a place – Apulia – to which we owe everything.

it is the know-how of the best craftsmen in the world who, each time with almost alchemical precision, bring magic into play and turn the drawing into a tangible product.

As with a consummate tailor, very few tools are required: a tape measure, some scissors and the raw materials – wood, the filling and the covering. Everything else comes down to precious experience and talent, demonstrating once and for all that Italian design is (and always will be) in a league of its own. Working in concert with them but taking it from a different angle (the angle of innovation), the research and development team does its own part, studying new hi-tech materials, foams and innovative fibres as well as automated ergonomic mechanisms which raise the bar in terms of customer well-being and enjoyment. By investing in research and development, Natuzzi has stayed ahead of the style curve, flushed its leather with the colour (actually the colours) of our homeland and honed its work processes, such as laser cutting, in order to achieve pinpoint accuracy.



Our determination to stay here and to keep on producing, innovating, investing and creating value here is the natural consequence of a business ethic which has guided our progress unerringly over the past 60 years. It is an integral part of a value chain that is the only way forward on the path to continued excellence. We tread this path every day and you accompany us along the way each time you choose one of our products. It is not only an aesthetic choice; it is a taking of sides – and we lie on the side of the Ethic of Harmony.

Which means loving and respecting nature, starting with the raw materials that our artisans lovingly handle day by day.



There is the wood and the forests that it is harvested from – and our commitment is FSC-certified®. Then there is the leather which we process using some of the most advanced solutions in Europe in order to protect the environment. And the air which we preserve by only using the limitless solar energy of Apulia to create our products. All our raw materials are tracked too because we expect our suppliers to provide the same quality guarantees and respect for the environment that we do. Not to mention respect for people. But our history and our forefathers taught us about another kind of sustainability. The great artisans of the past created objects that would last; they had a really long lifespan and gave years of use. Dusting off this philosophy and marrying it with timeless designs means delivering products that will be welcomed and treasured by the next generations as well. This is what we do. Because designing and producing objects that will last and last, for us, is a way to express our DNA. We are not just talking about materials; we are talking about style.

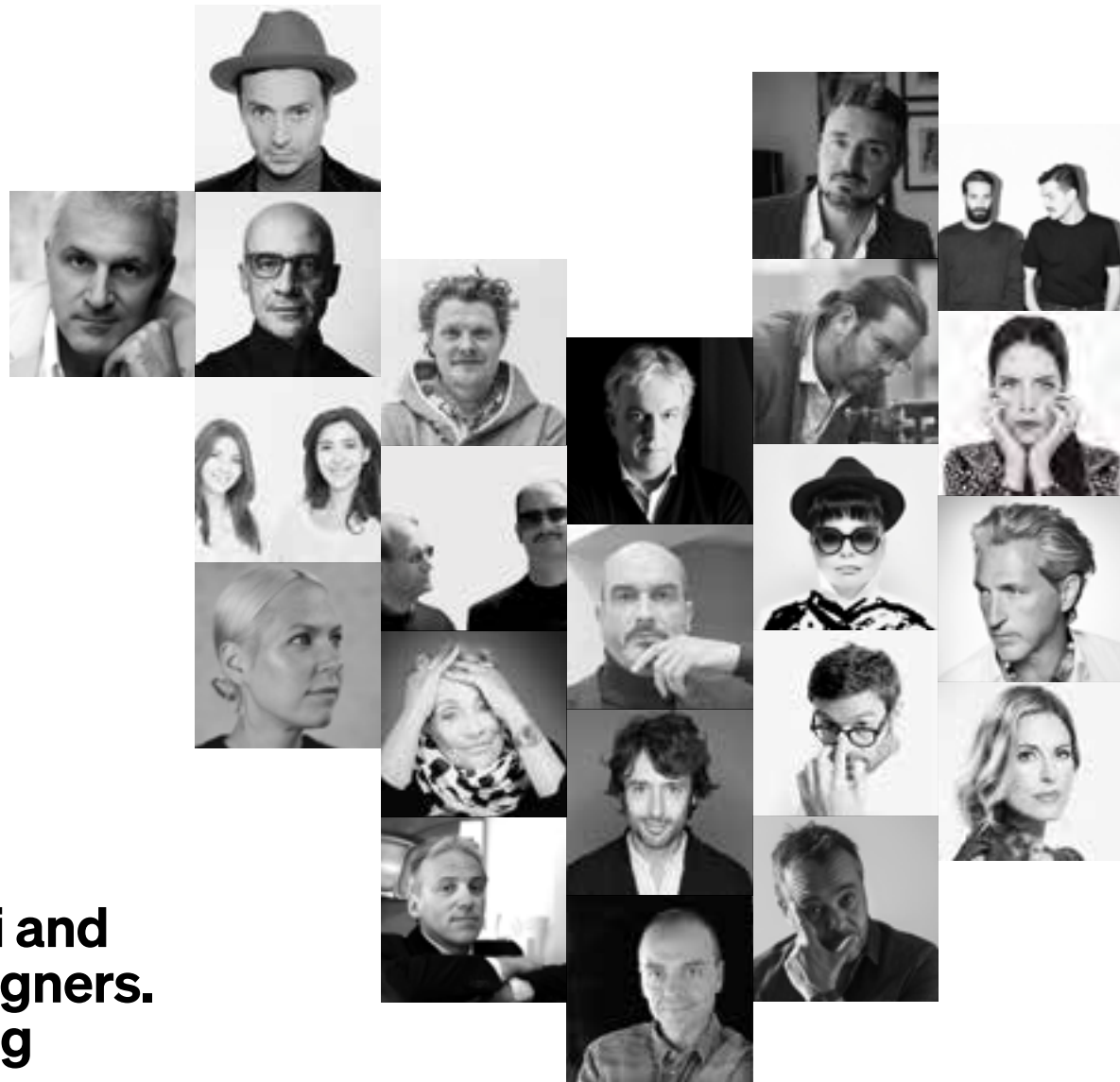
About ageless beauty and elegance that endure the passage of time and passing trends.

The beauty of an inimitably glorious home to which we were born and in which we were brought up; a home that delights the eye wherever you happen to cast it - Italy.

natuzzi and its designers. evolving harmony.

Natuzzi Italia's partnerships with designers from across the world take inspiration from the brand's values, seeking to showcase and share them in turn at all times. The most important of these values is Harmony. And the "place" in which the brand and its designers meet to define the style, content and goals of each new collection is the **Circle of Harmony**, modern incarnation of a time-honoured tradition still going strong in the Mediterranean culture - that of the symposium, the sharing and discussion of a topic of common interest in an informal, convivial setting.

Today the subject matter is change, the one we are experiencing and which we believe will allow us to fully enjoy a 'new normal', consolidating new equilibriums in a continually evolving context. We decided to bring together designers with very different experiences and backgrounds to discuss this topic and lay the foundations for a collection that encourages people to embrace this global transition in an active and engaged way.



Live the Transition, the concept behind the collection, is first and foremost a maxim addressed to the designers - and by designers to the world. A new way of understanding this new normal, supported by a vision rooted in the brand's DNA. The ability to embrace change and turn it into a moment of evolution is an instinct that has a strong presence in Mediterranean culture, which has always been open and dynamic, constantly evolving. This inspired the designers to deeply rethink our relationships with our home, focusing on our new living requirements and showcasing them through the innovative design vision of Natuzzi Italia. The result is a collection whose keywords are functionality, sustainability and wellbeing. The start of a *new Era of Harmony*.

Bernhardt & Vella,	210, 280, 304, 353, 376
Borre Akkersdijk,	95
Claudio Bellini,	98, 104, 130, 194, 242, 276, 284, 309, 323, 325, 329, 339, 341, 349, 350, 352, 353, 359, 364, 369, 373, 376
Enrique Marti,	186, 334
Formafantasma,	30, 37, 305
Lorenza Bozzoli,	58, 63, 335
Manzoni&Tapinassi,	74, 82, 88, 138, 260, 315, 317, 322, 341, 344, 346, 347, 350, 360, 363, 364, 368, 373, 377, 386
Marcantonio,	24, 29, 166, 171, 320, 348
Marcel Wanders studio,	18, 22, 44, 120, 124, 127, 232, 303, 316, 332, 342, 344, 348, 354, 366, 367, 371, 383, 387, 389, 390
Massimiliano Raggi	382
Massimo Iosa Ghini,	48, 53, 236, 321, 338, 368
Maurizio Manzoni,	150, 154, 180, 324, 328, 331, 340, 385
Mauro Lipparini,	54, 92, 108, 114, 158, 172, 209, 241, 254, 266, 310, 311, 312, 313, 326, 333, 340, 343, 345, 346, 347, 349, 350, 352, 355, 356, 357, 358, 362, 363, 367, 369, 372, 374, 375, 382
Michele Menescardi,	218, 319, 361, 384
Nika Zupanc,	142, 145, 246, 251, 314, 336, 338, 342, 348, 351, 366, 370, 371, 381, 384, 386, 390
Paola Navone	345
Patrick Norguet,	270, 275, 353
Sabine Marcelis	38, 43, 307, 365
Victor Vasilev	385

natuzzi

from a to z

seating

sofas

adam 18, 21, 23, 303
amalia 210, 304
apulo 30, 33, 34, 305
balance 212, 215, 216, 306
block 38, 41, 307
borghese 204, 207, 308
botanic 194, 196, 309
buddie 92, 93, 96, 310
campus 114, 116, 118, 311
cava 158, 160, 312
colosseo 172, 176, 177, 313
deep 142, 143, 148, 314
dorian 138, 141, 315
euforia 44, 46, 316
herman 82, 85, 86, 90, 99, 317
iago 64, 66, 68, 70, 318
icon 218, 220, 319
infinito 166, 168, 320
juno 48, 50, 321
kendo 74, 77, 78, 80, 322
la scala 104, 106, 107, 323
leaf 150, 152, 324
long beach 98, 99, 100, 325
melpot 108, 111, 326
oblò 180, 185, 328
pablo 130, 133, 134, 329
philo 198, 201, 202, 330
positano 154, 157, 331
skyline 120, 123, 128, 332
sohay 54, 57, 333
stan 186, 189, 192, 334
timeless 58, 60, 335
wave 146, 336

sofa beds

capriccio 224, 226, 228, 337

armchairs

adore 143, 248, 338
beat 239, 241, 338
blossom 80, 177, 339

botanic 196, 339
cassia 209, 340
clemmie 157, 340
conca 90, 341
couture 88, 341
deep 148, 342
dove 127, 342
fiorita 21, 343
ilia 343
lave 123, 344
logos 201, 344
margaret 93, 345
marlene 107, 345
penelope 66, 346
viaggio 77, 85, 100, 346

ottoman + benches

herman 86, 100, 141, 347
melpot 111, 282, 347
skyline 70, 123, 348
terra 24, 27, 348
wave 146, 148, 348

chairs

ambra 260, 262, 349
edgar 234, 349
frida 111, 349
pi greco 215, 350
valle 118, 256, 259, 350
vesta 244, 350
voyage 143, 146, 248, 251, 351

bed

beds

briq 276, 278, 352
campus 266, 269, 352
ema 270, 272, 353
fenice 280, 282, 353
piuma 284, 353

furnishings

coffee and side tables

adam 21, 354
campus 116, 118, 355
cava 160, 164, 196, 215, 356
chocolat 207, 356
estro 152, 357
feudo 33, 57, 60, 357
fil rouge 177, 358
frost 133, 134, 359
herman 50, 85, 86, 90, 99, 100, 141, 360
icon 201, 220, 361
ido 66, 362
ika 93, 97, 363
kendo 77, 80, 363
labirinto 272, 364
orfeo 104, 185, 364
patio 41, 365
saturday 226, 365
skyline 46, 47, 70, 123, 128, 366
voyage 143, 146, 366

tables

adam 232, 234, 367
campus 118, 254, 256, 258, 259, 367
gutta 236, 239, 368
kendo 260, 368
ombra 242, 244, 369
phantom 111, 369
voyage 143, 146, 246, 248, 252, 253, 370

shelving & storage

bookcases

arch 123, 371
tide 148, 371

sideboards

campus 256, 259, 372
fortuna 134, 244, 373
orfeo 104, 185, 373
phantom 220, 374

bedroom furnishings

campus 269, 375
fenice 282, 376
mondrian 284, 376
svevo 278, 377

decor

rugs

affresco 104, 107, 172, 220, 378
globes 66, 378
jade 189, 379
luce 97, 177, 379
magna grecia 50, 85, 380
seti 77, 100, 116, 157, 185, 380
sophia B 57, 60, 70, 80, 86, 90, 111, 118, 123, 128, 133, 134, 141, 160, 196, 244, 256, 272, 278, 282, 284, 381
vortex 143, 146, 248, 381

lamps

circle 239, 382
colosseo 57, 100, 107, 111, 116, 157, 168, 172, 220, 226, 256, 382
dami 66, 70, 128, 141, 244, 259, 383
ding dong 152, 215, 383
galileo 282, 384
joy 143, 146, 148, 248, 384
kendo 77, 80, 104, 385
vico 118, 134, 201, 278, 284, 385

mirrors

chocolat 111, 386
mermaid 148, 248, 386
orfeo 104, 386
sailor 148, 386

plaid and cushions

trulli 177, 387

accessories

dandy 77, 128, 387
pumo 50, 70, 80, 90, 118, 133, 141, 143, 152, 157, 185, 189, 196, 207, 248, 256, 388
silo 85, 177, 389
urchin 93, 123, 160, 220, 390
voyage magazine holder 146, 148, 390

room fragrances

trullini 33, 46, 60, 152, 177, 391

wallpaper

alba 134, 392
foresta 116, 196, 278, 392
orizzonte 80, 111, 141, 215, 392
prospettiva 70, 392
teatro 104, 393
tele 86, 100, 393
vista zenitale 172, 393



living

harmony
comes
from change.

The ability to adapt to change is not only a virtue requested of people: our furnishings are also required to become more "versatile", capable of meeting different needs, reinventing themselves continuously. This is particularly true of the sofa, icon of the Natuzzi style. Today more than ever, everything revolves around this item of furniture - social occasions, conversation, reading, music, relaxation, work and study. While the interior spaces of our homes adapt to our new day-to-day lives, the sofa becomes the embodiment of our new living priorities, functionality and continuity between spaces, which it interprets with a style that never fails to amaze. Centrepiece of an interior design story enriched on a daily basis with new characters - side tables, armchairs, bookcases, desks, sideboards, bar furniture - that share the same mission: to live (and allow you to live) in harmony.

designed by
Marcel Wanders studio

adam

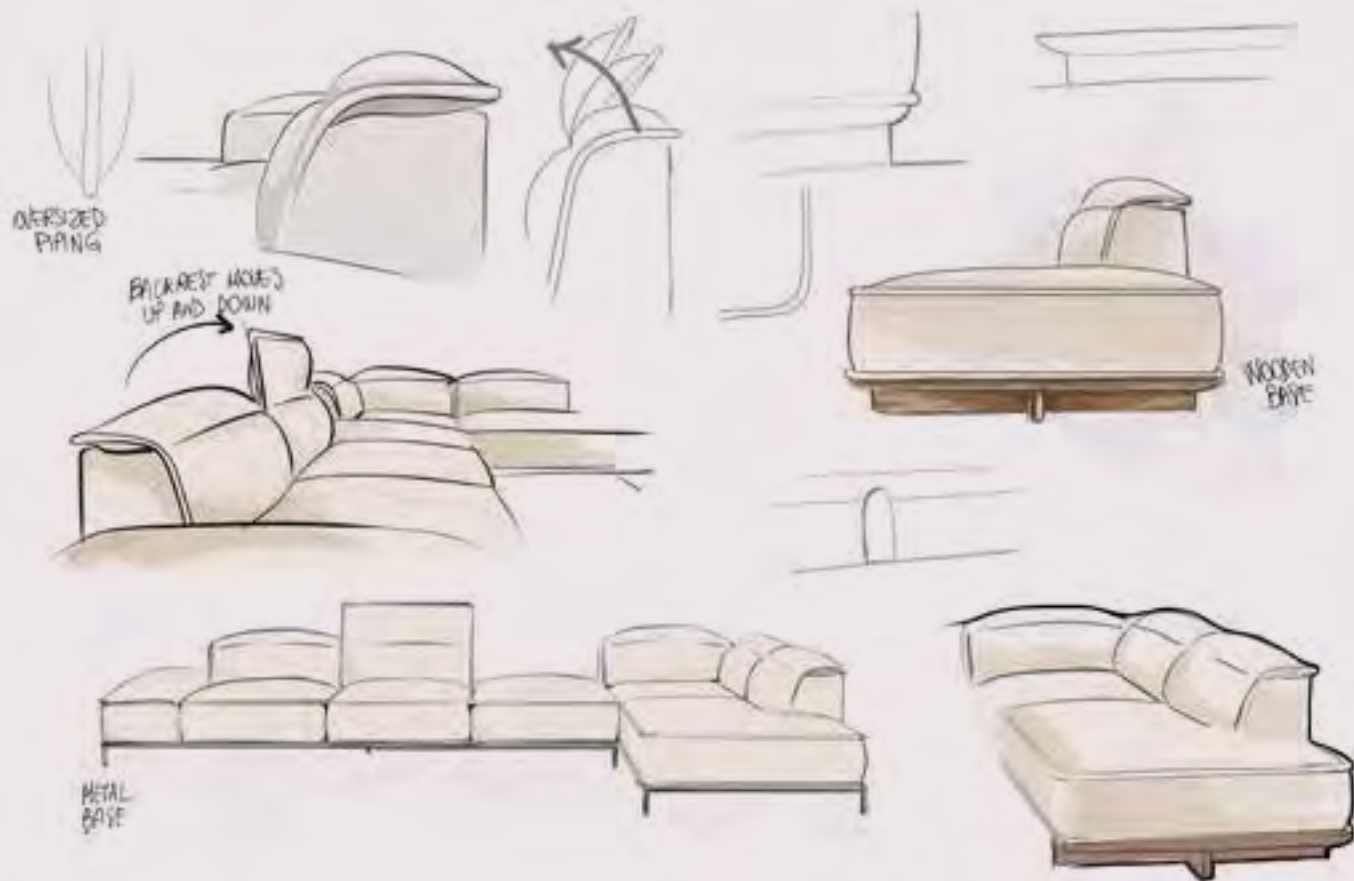
Like the first inhabitant of that ancestral pristine Earth, Adam is the name of the sofa that Natuzzi has created in collaboration with the Marcel Wanders studio. A new interpretation of the iconic Natuzzi style, enhanced to make it an archetype for its subsequent evolutions, Adam is designed with the desire to combine natural materials and a timeless look inspired by Puglia, the region that represents the brand's roots and symbolizes the Mediterranean lifestyle that it brings to the world.





Adam sectional sofa shown
in siena leather
H76-W390-D224cm
H30 - W154 - D88"
Fiorita armchair.
Adam coffee table.

An integrated ottoman version
is available that can also be
used with a dual function, as
additional seating or as a shelf
to serve the sofa.



“Nature, origins, earth: this collection not only reflects Puglia’s ancestral style and rich artisanal history, but is capable of living a second life by being timeless.”

— Marcel Wanders



Adam, thanks to its extreme versatility of configurations and upholstery, satisfies every need for space and comfort. Upholstered sofa sides with hidden, removable hooks. The solid wood or metal base and piping along the entire profile of the sofa enrich and emphasize the design of the model.

Microcellular polyurethane foam padding made from a plant based raw material, drawing from renewable sources found in nature.



designed by
Marcantonio

terra

“Nomen omen”, the Latins said. In the name, its destiny. Terra means Earth and right from its name we wanted to emphasise the close bond that binds it to it. Terra was created to rest directly on the ground, without any other filter or structural barrier. And it has been produced from the earth and for the earth, being composed only of biobased materials and eco-friendly coatings, with the utmost respect for the planet.

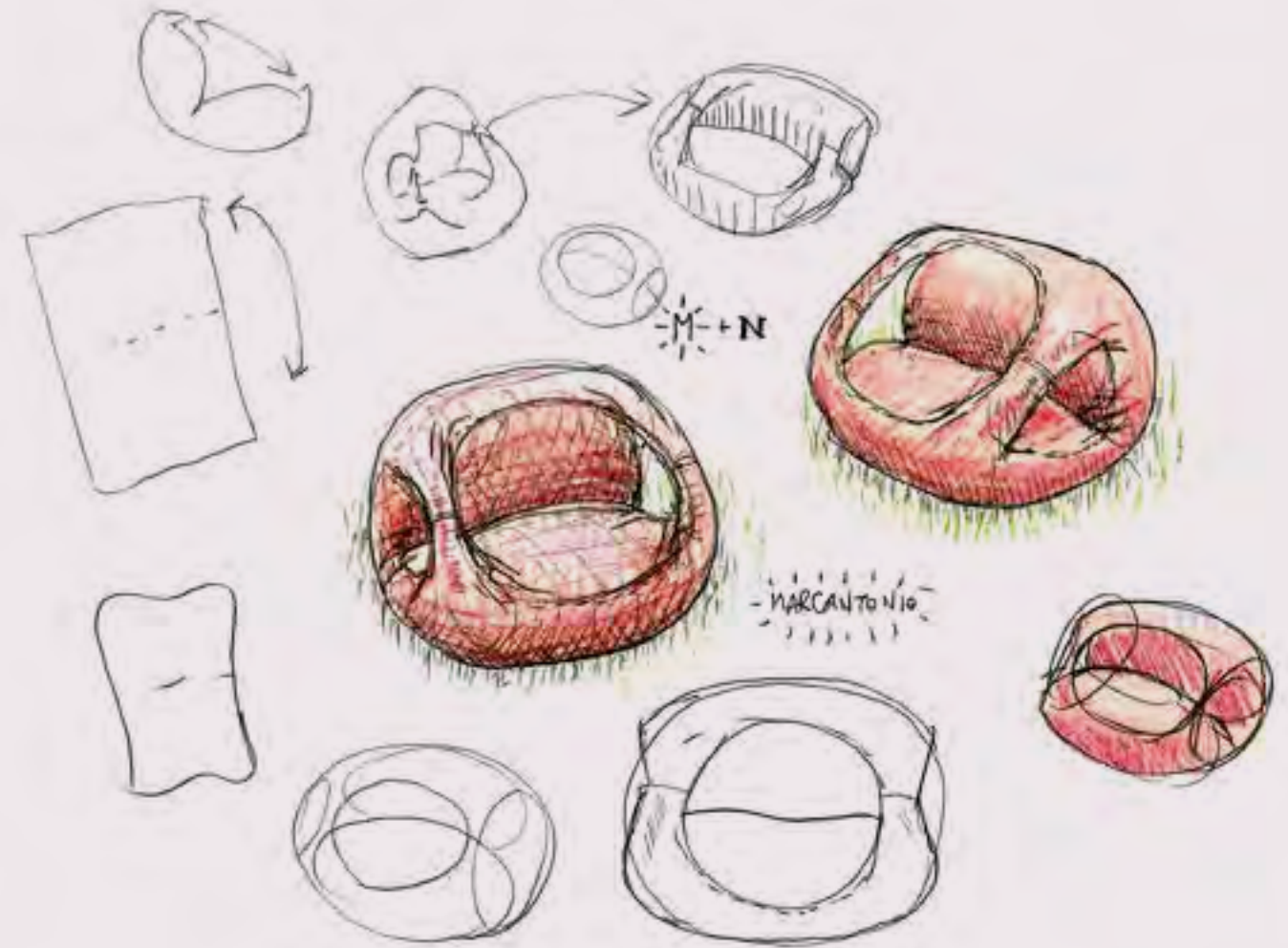




Terra pouf shown in Gaia eco-fabric and siena leather.
L60 – P98 – H90 cm
L24 – P39 – H35"

Terra is produced in Natuzzi Italia factories equipped with more than two thousand photovoltaic panels and a fluid-free heating system and is designed to be a totally eco-friendly product. It has an iconic design that can be used in different environments of the house.

Padding in recycled polystyrene that make it light and adaptable in shape to achieve the desired comfort.



“Natuzzi made me experience the heritage of his land, Puglia, from whose simplicity and naturalness this project was born. Terra with its armrests recalls a hug to our planet and to the right causes to defend it.”

— Marcantonio

designed by
Formafantasma

apulo

Apulo embodies a new concept of versatility, created to merge multifunctionality, comfort and design and inspired by the rational realism of rural Puglia. To which it pays tribute, starting with the name. The barrel vaults of the old farmhouses are revived in its curves, as are traditional objects created for work, such as the rake, reproduced in the sofa.





Apulo sectional sofa
shown in Stylish leather.
H71 - W268 - D239 cm
H28 - W106 - D94"
Feudo coffee table.
Trullini air scents.
Dysidea cushions.

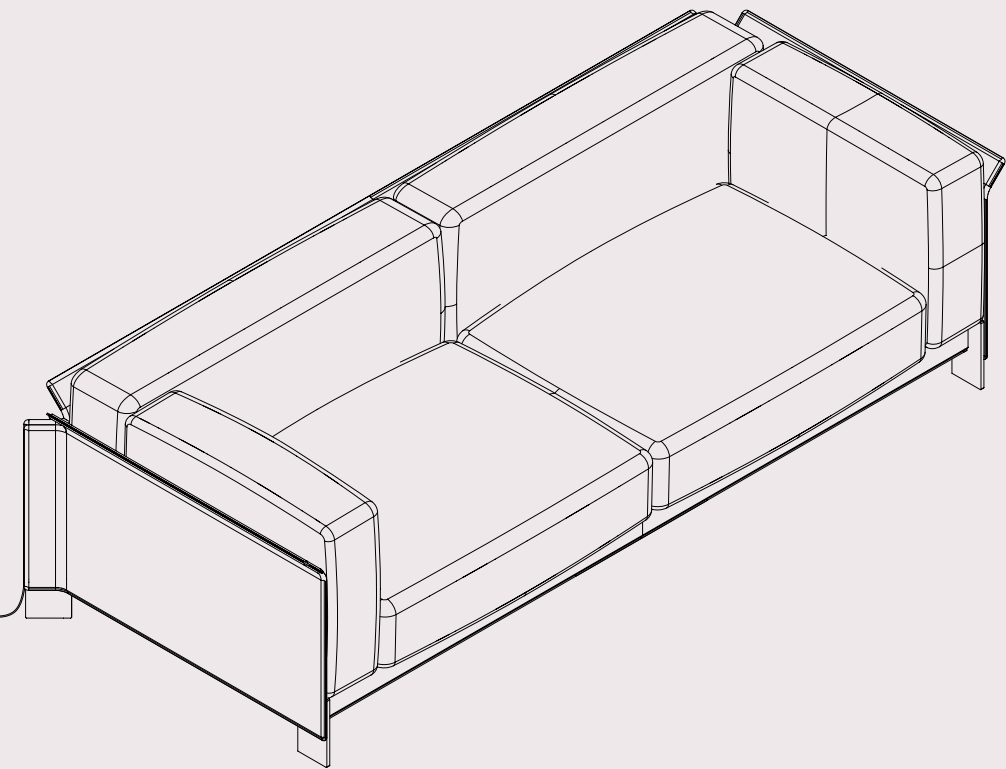
A wooden desk to be attached to the back of the frame provides a comfortable work surface. **Apulo** expands its functions according to the increasingly sophisticated requirements of the home

A duct to conceal electric cables belonging to a laptop is integrated into the structure of the sofa. In one detail, Natuzzi Italia's continuing design research





Founded in Amsterdam by Andrea Trimarchi and Simone Farresin, **Formafantasma** is a design firm whose research is based on investigating the historical, political, ecological and social forces that influence today's design culture. This gives them a unique perspective on the legacy of industrial production as a primary inspiration for designers' work in contemporary society and its historical contribution to environmental instability. It is also easier to propose transformative interventions through design and its material, technical, social and deductive possibilities. Their projects have been presented, published and acquired in the permanent collection of the MoMA in New York, the Centre Pompidou in Paris, the Triennale in Milan and many other museums.



“The project stems from a desire to embrace contemporary life by drawing inspiration from the rational concreteness of rural Puglia.”

designed by
Sabine Marcelis

block

Block is a sofa/sculpture that visually reflects the harmonious synthesis between brand and designer - the background of Marcelis, a born sculptor, combined with the sinuosity and comfort of Natuzzi. A comfort which, owing to the front wheels, follows us everywhere, thus embracing the philosophy of liquid space, of the movable, where that which is needed is always where it needs to be.

A monolithic base in natural bamboo accommodates a generous, abundant padding, which almost seems to overflow and pour out.



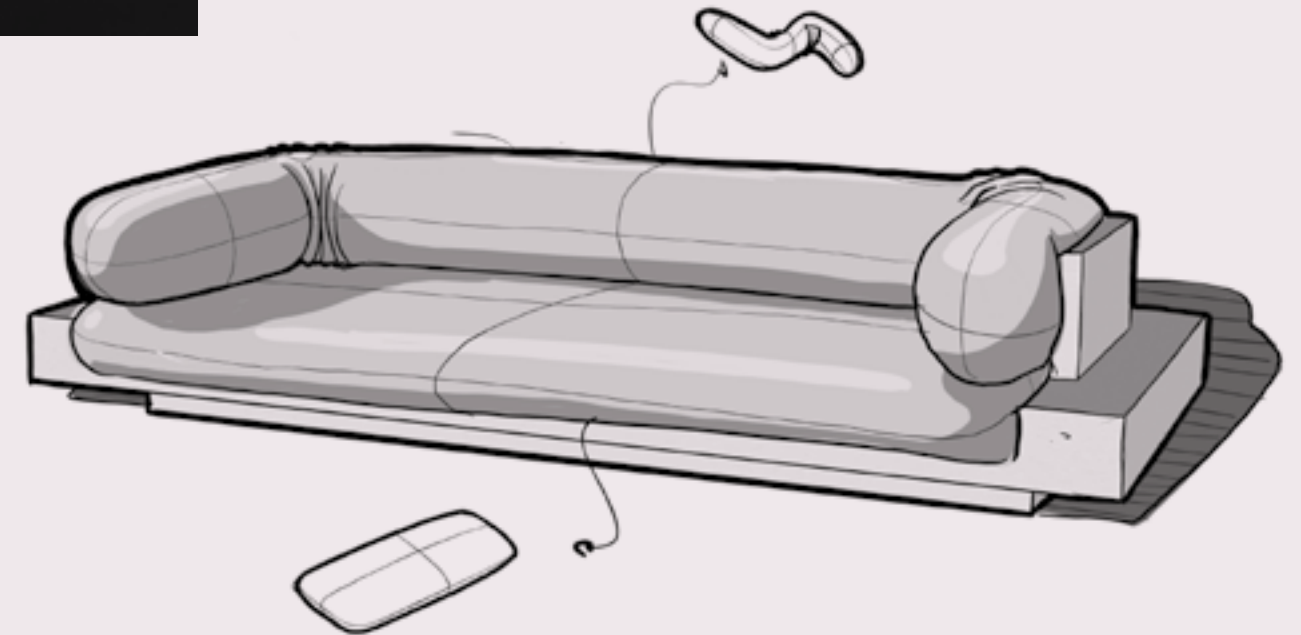


Block three-seater sofa shown in Stylish leather.
H65 - W280 - D96 cm
H26 - W110 - D38"
Patio coffee table.
Arancio vases.

The exploration of materials, the study of geometries, the attention to the relationship with light - all themes dear to the Dutch designer - give life to an object with an innovative aesthetic and surprising dynamism. **The Patio coffee table**



Sabine Marcelis, a young Dutch designer who has won prestigious awards such as the 2019 Design Prize in the 'Newcomer of the year' category and the Wallpaper Awards for 'Designer of the year 2020', continues her research in her Rotterdam studio into pure forms that enhance and exalt the special features of different materials. This allows her, in her collaborations with companies, to intervene early on in the production process, achieving surprising new effects: her designs are not simply static works, but real visual and sensory experiences in which experience itself becomes function, with a sophisticated and unique aesthetic.



“In the new domestic space, which is fluid and constantly changing, objects must also evolve, offer us more functions and follow us wherever we go.”

designed by
Marcel Wanders Studio

Completing the light,
harmonious silhouette of
Euforia is the base made of
shiny black metal.

euforia

Euforia pays tribute to the olive leaf, whose elegance already resembles an object of design. The sofa retains its essential, soft aesthetics, replicated in the armrests and backrests with a slightly flared configuration, forming a type of plant-like frame around the seat. A modular system to meet the needs of a multifunctional, elegant and compact living room.



Eufolia sectional sofa
shown in Stylish leather.
H75 - W325 - D230 cm
H30 - W128 - D91"
Skyline coffee tables.
Trullini air scents.



The **Skyline** coffee table plays on a recreation of urban landscapes by combining different materials, heights and sizes.

The modular nature of the sofa is enhanced by integrated shelving between the seats. Planning that includes small spaces is a challenge and an opportunity for new furnishing solutions.



designed by
Massimo Iosa Ghini

juno

The soft, enveloping aesthetic of Juno alludes to and pays tribute to the historic Natuzzi models, whilst also introducing a type of 'neo-humanism' in its design, in which the person returns to the centre of the project and completes it. Inclusion, a basic value of the Mediterranean lifestyle, upgrades the role of the sofa, which welcomes and embraces us by adapting totally to us.

The harmony arises from an encounter between the design of the seat - so inviting - and the rigid flaps that define the lines of the backrest and armrests, giving the sofa an image of balanced subtlety.



Juno three-seater sofa
shown in Nabuk.
H85 - W283 - D105 cm
H33 - W111 - D41"
Herman coffee table.
Pumo craft item.
Magna Grecia rug.

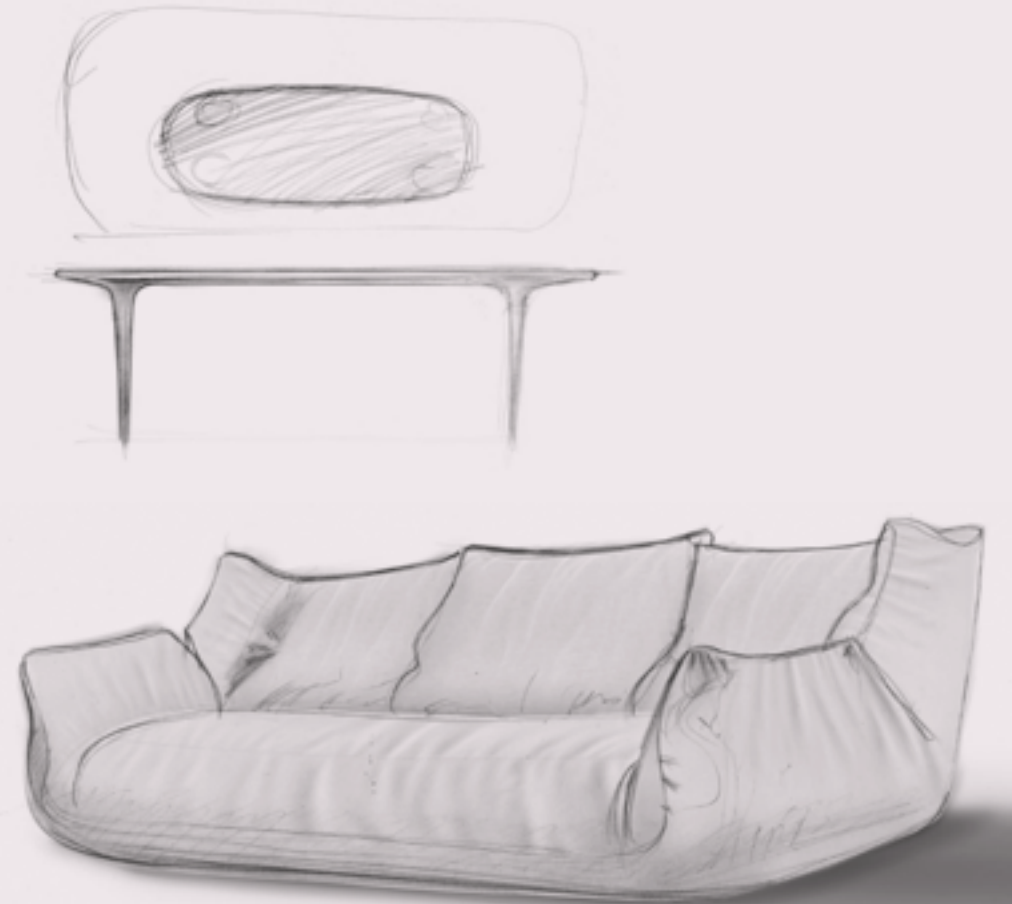


The coffered ceilings in
the Baroque churches of
Salento come to life in the
Magna Grecia rug.

The covering folds into curves beneath the weight and shape it accommodates. The seams emphasise the natural, almost floral lines along the profile, without interrupting the generous volumes.



Considered one of the masters of Italian architecture and design, since the '80s **Massimo Iosa Ghini** has been involved in the innovative work of the design avant-garde with the Memphis group and with Bolidismo, a movement that he founded. Iosa Ghini Associati was founded in 1990 and operates in Milan, Bologna, Moscow and Miami, designing residential, commercial and museum architectural spaces, cultural installations and public transport facilities. These projects have received awards such as the Good Design Award, the Red Dot Award and the International Architectural Award.



“On Juno, you don’t sit down in a composed fashion, but you throw yourself into it... with a dynamic gesture, precisely because you are sure to find the softness of a natural and welcoming womb.”

designed by
Mauro Lipparini

sohay

Natuzzi Italia offers an original new interpretation of its pioneering “comfort experience” with Sohay. A sofa of archetypal forms - it is reminiscent of the dry stone walls of the Apulian countryside - which thanks to an innovative mechanism can be transformed into a bed by lowering the backrest and sliding the seat onto its base.

The armrest is detachable and can also be used as a pillow in the bed version.





Sohay sofa shown in Essential leather and in Premium fabric.
 H85 - W200 - D96 cm
 H33 - W79 - D38"
Feudo coffee table.
Colosseo floor lamp.
Sophia B rug.

The handle between the seats permits them to slide thanks to a hidden mechanism.

Simplicity and linearity enclosed in a metal cylinder.
 The **Colosseo** illuminates the setting, even when switched off.



designed by
Lorenza Bozzoli

timeless

Timeless captures the blossoming of a flower and holds that moment forever. Natuzzian harmony translated into elegant, subtle shapes like the wings of a butterfly. Modules with soft, deep seats give life to ever-changing configurations, revealing the eclectic taste of Bozzoli that stems from the world of fashion.

Tailored cut, generous, enveloping line, and sinuous, sophisticated asymmetrical shapes. The emblem of a Made in Italy range that continues to create inexhaustible elegance.



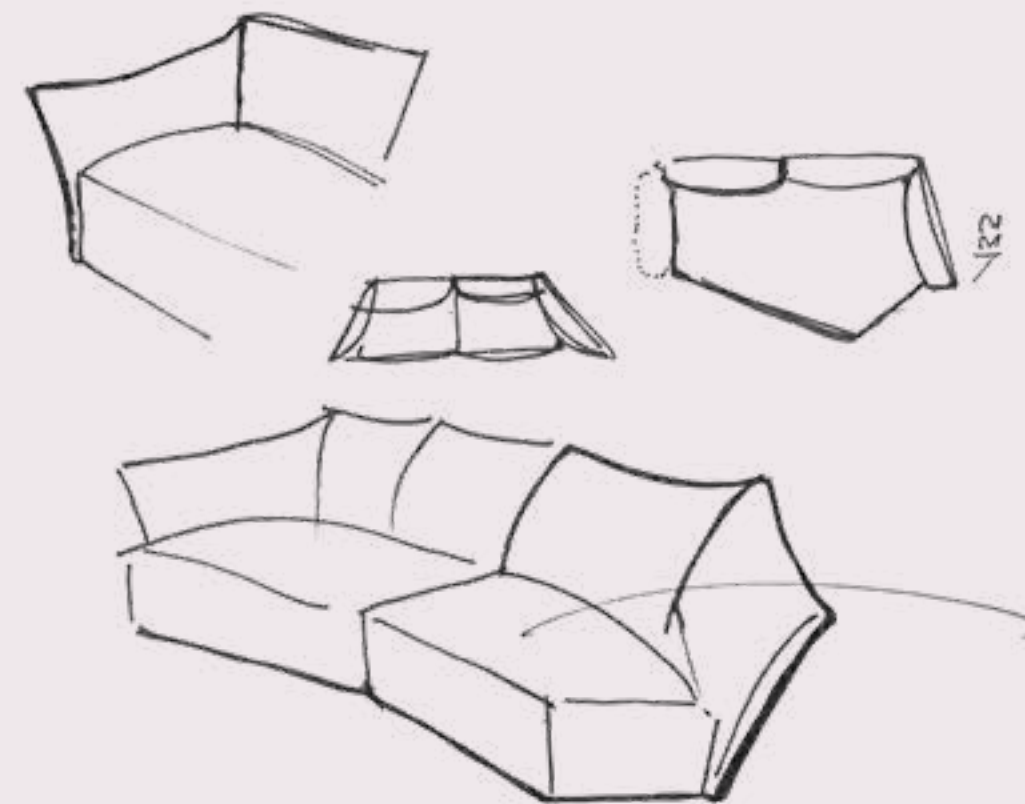
Timeless sectional sofa
shown in Premium fabric.
H80 - W420 - D295 cm
H31 - W165 - D116"
Feudo coffee table.
Trullini air scents.
Sophia B rug.

Timeless reinterprets visual
comfort and the concept of
Mediterranean slow living
connected with the beauty of
nature, all foundations of the
Natuzzi Italia style.





Lorenza Bozzoli lives and works in Milan, where she was born. After attending the Brera Academy of Fine Arts, she moved to New York to launch her career in fashion with her first self-produced collections. Back in Milan, she began working with Elio Fiorucci and collaborated with major clothing brands. Her focus then shifted to the design world, which recognised her talent and extremely personal style. A series of collaborations with Alessi, Pomellato, Slamp and other brands, both Italian and international, led her to found, in 2018, the Lorenza Bozzoli Couture brand, which produces high-end contemporary furniture accessories.



“Timeless is a tribute to blossoming, to rebirth, to the beginning of a new positive life cycle in the name of well-being.”

designed by
Natuzzi Design Center



iaggo

The artisanal workmanship comes together with the innovation, whose prime objective is to heighten comfort levels. Linear and geometric shapes hide exclusive motion systems allowing you to customise everything to suit your own needs.

Exquisitely sewn "pinched seams" highlight the peerless quality of the coverings.

lago chaise sofa
shown in Essential leather.
H75/99 - W303 - D169 cm
H30/39 - W119 - D67"
Penelope armchair.
Ido coffee table.
Globes rug.
Dami floor lamp.



Reclining footrest and headrest - the "made to measure" comfort you're searching for.



Watch lago sofa in motion

The incredibly versatile design of the **lago** sofa allows for personalisation so you can achieve a result that suits your style, space and comfort requirements down to the ground.

Here are some suggested arrangements.



Three-seater sofa
H 75/99 - W 308 - D 111 cm
H 30/39 - W 121 - D 44"



Chaise sofa
H 75/99 - W 303 - D 169 cm
H 30/39 - W 119 - D 67"



Sectional
H 75/99 - W 313 + 227 - D 111 cm
H 30/39 - W 123 + 89 - D 44"



Sectional with end unit
H 75/99 - W 324 + 227 - D 111 cm
H 30/39 - W 127 + 89 - D 44"



Sectional with chaise-longue
H 75/99 - W 391 + 227 - D 111 cm
H 30/39 - W 154 + 89 - D 44"

iago

iago sectional with end unit shown
in Premium microfibre
H75/99 - W313 - D340 cm
H30/39 - W123 - D134"
Skyline bench.
Skyline coffee table.
Pumo craft items.
Sophia B rug.
Dami floor lamp.
Prospettiva wallpaper.
Decorative cushions.





Lots of different units for ever-changing arrangements. Imagination in the driving seat.

Reclinable footrest and headrest allow you to create your perfect comfort.



designed by
Manzoni&Tapinassi

kendo

A perfect combination of modularity, fine craftsmanship and curated design, Kendo's refined personality is further enhanced by exquisite detailing, like the solid-wood base embellished with a sleek metal insert. A distinguishing feature that takes on the guise of an oriental mark.





Kendo three-seater sofa shown
in stylish thick leather.
H77 - W242 - D104 cm
H 30 - W95 - D41"
Viaggio armchair.

Kendo coffee table.
Dandy candle holder.
Kendo floor lamp.
Seti rug.



The incredibly versatile design of the **Kendo** sofa allows for personalisation so you can achieve a result that suits your style, space and comfort requirements down to the ground.

Here are some suggested arrangements.



Sectional
H77 - W278 - D327 cm
H30 - W109 - D129"



Three-seater sofa
H77 - W242 - D104 cm
H30 - W95 - D41"



Chaise sofa
H77 - W342 - D168 cm
H30 - W165 - D66"



Sofa with end unit
H77 - W104 - D242 cm
H30 - W41 - D95"



Sectional with end unit
H77 - W322 - D242 cm
H30 - W127 - D95"

kendo

Kendo sectional with end unit shown in Premium fabric.
H77 - W322 - D242 cm
H30 - W127 - D95"
Kendo coffee table.
Pumo craft item.
Sophia B rug.
Blossom armchair.
Orizzonte wallpaper.



designed by
Manzoni&Tapinassi



herman

Reminiscent of a fish tail, the external metal support that embraces and clasps the backrest and seat is a standout feature on this piece. The various units can be arranged to create in-line, corner or peninsula compositions to be completed with tables in a variety of shapes and sizes.





Herman chaise sofa shown in Stylish leather.
H77 - W327 - D155 cm
H30 - W129 - D61"
Viaggio armchair.
Herman coffee table.
Silo vases.
Magna Grecia rug.
Decorative cushions.

herman

Herman sectional with end unit shown in Premium fabric.
H77 - W276 - D357 cm
H30 - W109 - D141"
Herman coffee table and pouf.
Decorative cushions.
Sophia B rug.
Tele wallpaper.

This sofa can be personalised with a grosgrain detail (in either a tonal or contrasting shade) which further enhances its innate charm.



couture

designed by
Manzoni&Tapinassi



Sharp geometrical shapes and sleek volumes for an oasis of relaxation and comfort. This is no mirage; it is the **Couture** swivel armchair.

Couture armchair with swivel base shown in Stylish leather.



herman

Herman sectional with end unit shown in Premium fabric.
H77 - W348 - D265 cm
H30 - W137 - D104"
Herman coffee table.
Pumo craft item.
Conca swivel armchair.
Sophia B rug.

The plushness of the sofa brings to the fore the beauty of Water - the exclusive 3D fabric made by BYBORRE which is a combination of premium-quality wool and recycled PES.

The sleek design of the armrests with elegant flat-felled seamwork which is invisible from the outside.



designed by
Mauro Lipparini

buddie

Buddie is a contemporary take on the living room with a versatile system that can be endlessly rearranged, as well as backrests and seat cushions which slot smoothly into each other in a triumph of overlapping shapes that is not only aesthetically pleasing but also functional.



Buddie three-seater sofa
shown in Premium fabric.
H77 - W320 - D100 cm
H30 - W126 - D39"

Margaret armchair.
Ika coffee tables.
Urchin vases.
Decorative cushions.

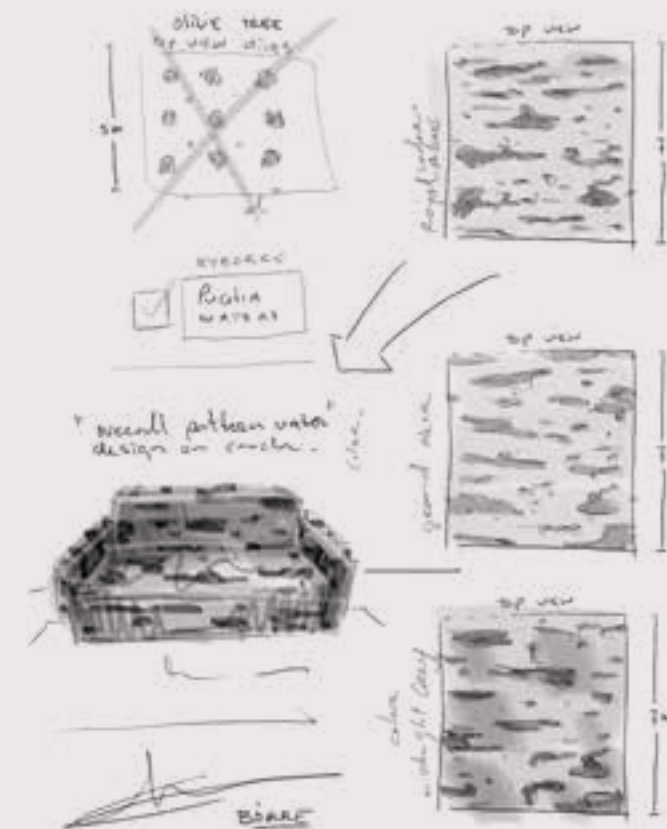


Water - the exclusive BYBORRE 3D fabric, is a combination of premium-quality wool and recycled PES.

BYBORRE®



Borre Akkersdijk is a Dutch textile designer and the founder of the fabric-innovation studio BYBORRE. Born in Wamel, Netherlands, he studied fashion design at the Fashion Institute of Technology in New York and received a Bachelor's in Man and Identity from the Design Academy Eindhoven in 2009 before working at the Paris-based design consultancy bureau Studio Edelkoort. He started BYBORRE in 2010, initially consulting for brands such as Nike and Louis Vuitton before deciding to focus solely on the development of his now signature 3D knitted fabrics. In 2012, he won the Young Designer of the Year award at the Dutch Design Awards. Research into the future of fashion and integrated technology resulted in presentations at South by Southwest, Beijing Designweek and Salone del Mobile Milano, as well as publications in the Wired magazine and Fast Company Magazine. Today, BYBORRE is a landmark studio filled with a wide range of machines and a team of specialists from all corners of the textile industry. The collaboration with Natuzzi, the first with a furniture company, represents the kind of disruptive intuition that defines the creative vision of Pasquale Junior Natuzzi. It is based on his belief that innovation should not be limited to collaborations with the leading figures and most prolific minds of contemporary design, but should lead the company to rethink their production methods, starting from their very foundations, with a new, radical approach that combines the most outstanding quality and sustainability. An approach in which process and product are equally important. In this regard, BYBORRE has proven to be a perfect partner. By studying and embracing Natuzzi's brand identity, the Dutch factory has created WATER, an exclusive fabric that embodies the heart and soul of Apulia, the muse that inspires Natuzzi's entire way of thinking. A 3D™ fabric that is unique worldwide, featuring a pattern that evokes the continuous movement of water, conveying all of Pasquale Junior's love for the sea. A knitted fabric made with a blend of the finest wools and recycled PES, which makes it extremely resistant and durable, yet luxurious, comfortable and totally eco-friendly. A fabric that embodies Apulia's heritage and the brand's identity, testifying to Natuzzi Italia forward-thinking vision.



“By thinking about the future of people and the planet, we are finding new ways to create quality, custom, and sustainable fabrics.”

buddie

Buddie three-seater sofa
shown in Premium fabric.
H77 - W286 - D109 cm
H30 - W113 - D43"

Buddie chaise sofa
in Essential leather.
H77 - W317 - D164 cm
H30 - W125 - D65"

Ika coffee table.
Luce rug.



designed by
Claudio Bellini

long beach

A harmonious mix of design, premium materials and fine Italian workmanship. Invitingly comfortable, its armrests leave plenty of room for the seat cushions. The modular frame allows for endless rearrangements, from a simple and linear layout to a total-living concept with fully integrated low bookshelves.



Adapt the height of the feet to suit your style requirements. Versatility down to the tiniest detail.



Long Beach three-seater sofa shown in Performance fabric.
H78 - W234 - D102 cm
H31 - W92 - D40"

Herman coffee table.

long beach

Long Beach sectional
shown in Stylish leather.
H78 - W335 - D319 cm
H31 - W132 - D126"
Herman coffee table and pouf.
Colosseo floor lamp.
Viaggio armchair.
Seti rug.
Tele wallpaper.



Double backrest cushions
filled with goose down.
Comfort - in true Natuzzi
Italia style.



Lots of different units
for ever-changing
arrangements. Imagination
in the driving seat.

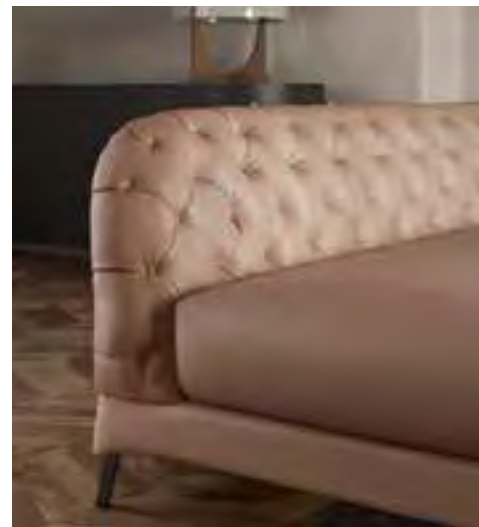


designed by
Claudio Bellini

La Scala sectional with end
unit shown in Prestige leather.
H69 - W287 - D188 cm
H27 - W113 - D74"
Orfeo coffee table.
Affresco rug.
Teatro wallpaper.
Orfeo sideboard.
Kendo table lamp.
Orfeo mirror.

la scala

La Scala gives a show-stopping spin to the most classic-looking of sofas, the Chesterfield. Claudio Bellini draws on superlative Italian workmanship and puts a chic modern stamp on this piece, which stands apart for the sharp edge that defines its sleek silhouette and contains the lofty button tufting.



Buttons lovingly attached by hand, one by one, in a shade that matches the chosen covering - either in leather or fabric.



la scala



La Scala dormeuse shown
in Stylish leather.
H69 - W92 - D165 cm
H27 - W36 - D65"
Marlene armchair.
Colosseo table lamp.
Affresco rug.



designed by
Mauro Lipparini



melpot

Apulia. A place where different races and cultures have always fused harmoniously, constantly filling a chalice of creativity and beauty that wells up and overflows. Melpot is a celebration of this melting pot which Natuzzi Italia epitomises in its designs and lifestyle.





Melpot sectional in Essential leather and Premium fabric.
H65 - W318 - D415 cm
H26 - W125 - D163"
Colosseo table lamp.
(92, 372, 813)
Melpot accent table and pouf.
Phantom table.
Frida chairs.
Chocolat mirrors.
Sophia B rug.
Orizzonte wallpaper.



Some units are also available in quilted leather or fabric, which adds to the total versatility of this piece and makes for a host of different combinations.

Poufs, drawers, bookshelves and table tops - an ode to flexibility.

designed by
Mauro Lipparini



campus

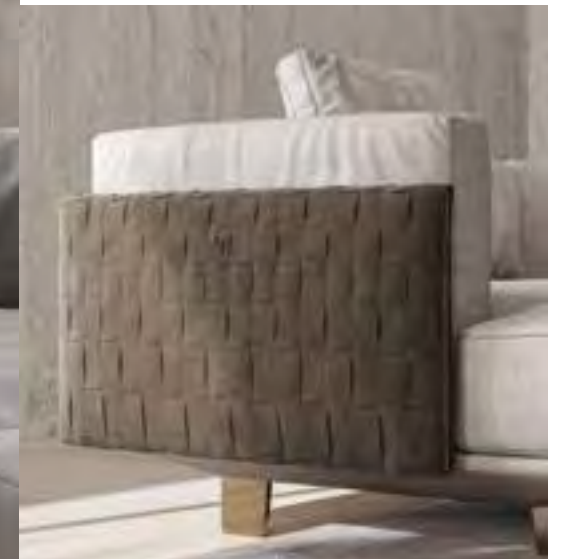
With its measured and sophisticated design, Campus bespeaks timeless elegance lending itself perfectly to any living area and satisfying any furnishing or space requirements with its modular seating system and wide range of coverings devised to create ever new configurations.

Campus three-seater sofa
shown in Trendy fabric and
Gargano suede leather.
H82 - W246 - D100 cm
H32 - W97 - D39"

Campus coffee table.
Colosseo floor lamp.
Seti rug.
Foresta Wallpaper.



Frames of armrests and
backrests are also available
in suede leather with
unevenly woven patterning
in 7 colours. For an
astounding combination.



campus

Campus sectional in Trendy fabric and Gargano suede leather.
H82 - W345 - D222 cm
H32 - W135 - D87"
Campus coffee table.
Pumo craft item.
Vico table lamp.
Campus dining table.
Valle chairs.
Sophia B rug.



designed by
Marcel Wanders studio

sky line

Skyline is Marcel Wanders studio' tribute to a charismatic cosmopolitan globetrotter who comes back to Apulia, bringing with him a wealth of experience and inspiration. The classical overtones and the pleasant roundness of the Chesterfield give way to sharp New-York style architecture. This is where Via Appia and Park Avenue meet.



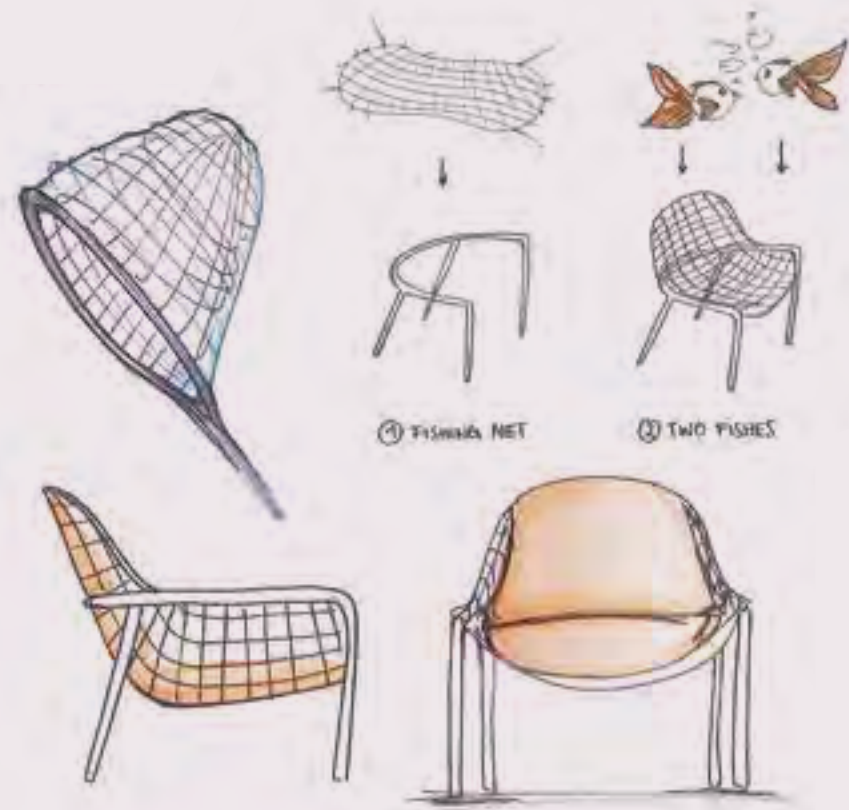


Skyline sofa with end unit shown in Essential leather. H80-96 - W290 - D108 cm
H31-38 - W114 - D43"
Skyline bench.
Lave armchair.
Skyline coffee table.
Urchin vases.
Sophia B rug.
Arch bookcase.
Decorative cushions.



Recliner, backrest and headrest mechanisms can all be adjusted with a single movement.

The Marcel Wanders studio is a leading product and interior-design studio located in the creative capital of Amsterdam. The studio has produced over 1,900 iconic product and interior-design experiences all around the globe for private clients and premium brands. Under Marcel Wanders and Gabriele Chiave's creative leadership and direction, the Marcel Wanders studio employs 52 design and communication experts. Regarded by many as an anomaly in the design world, the Marcel Wanders studio has made it its mission to "create an environment of love, live with passion and make our most exciting dreams come true."



"I felt it was truly an honour and also a responsibility to really bring elements of Apulia and its atmosphere into the design. When we are able to incorporate the local culture and natural beauty of a region into a project, it allows the furniture to then create a sense of place".



dove

designed by
Marcel Wanders studio

Dove, created by Marcel Wanders and honoured with the Red Dot Award. Airy and dynamic in a graceful way, on the one hand it recalls its Italian heritage, on the other exudes cosmopolitan flair. Its additional backrest makes it relaxing to sit and lie on, ensuring exclusive Natuzzi Italia comfort in two different seated positions. A new icon of lightness and edginess - and an eye-catching centrepiece in any living space.

Dove chaise-longue version shown in Premium fabric with a glossy black metal base.



reddot winner 2020



skyline

Skyline sectional with end unit in Premium fabric.
H80-96 - W332- D299 cm
H31-38 - W130- D117"
Skyline coffee table.
Dandy candle holder.
Sophia B rug.
Dami pendant lamp.



Even an arch foot can be an architectural feature on an open-base design.



designed by
Claudio Bellini

pablo

The joyfulness and generosity of Mediterranean culture translates into a versatile seating system with a welcoming familiar design. Playing with heights and geometrical shapes, the armrests have been elevated with satin-finish metal rings on both ends, matching the feet in the same finish.



Experiment with backrests in different heights to enjoy the comfort you need at any given time.



Pablo two-seater sofa shown with low back in Performance fabric.
H80 - W186 - D94 cm
H31 - W73 - D37"

Pablo chaise sofa shown with high back in Essential leather.
H100 - W330 - D152 cm
H39 - W130 - D60"
Frost coffee table.

Pumo craft item.
Sophia B rug.
Decorative cushions.

pablo

Pablo sectional with chaise-longue shown in Essential leather and Premium fabric. H100/80 - W455 - D229 cm
H39/31 - W179 - D90"
Frost coffee table.
Vico table lamp.
Fortuna sideboard.
Sophia B rug.
Alba wallpaper.



Seat units finished on all sides so that they can stand alone in various settings throughout the house.



designed by
Manzoni&Tapinassi



dorian

Time-defying design meets extreme modularity and extraordinary versatility - this was bound to become a perennial piece in our Natuzzi Italia collection. Dorian's appeal will never pall because its sleek silhouette and comfort-centric design will stay unchanged thanks to the premium-quality padding.

Refined raw-cut edges bring to the fore the beauty of the coverings, such as the premier-quality Cassidy leather (thickened and natural) and the innovative Manopesca (peachskin texture) fabric.





Dorian sectional with end unit shown in Stylish thick leather.
H79 - W318 - D278 cm
H31 - W125 - D109"
Herman coffee table and pouf.
Pumo craft item.
Dami floor lamp.
Sophia B rug.
Orizzonte Wallpaper.

It has been meticulously finished down to the tiniest detail and each single seat unit can also be used as a standalone piece.





designed by
Nika Zupanc

deep

Deep is closely linked to water and its fluid nature, with voluptuous lines that are reminiscent of the ebb and flow of the tide. Its seats come in a variety of different shapes and depths, lending themselves to countless combinations and infinite compositions with the other elements.



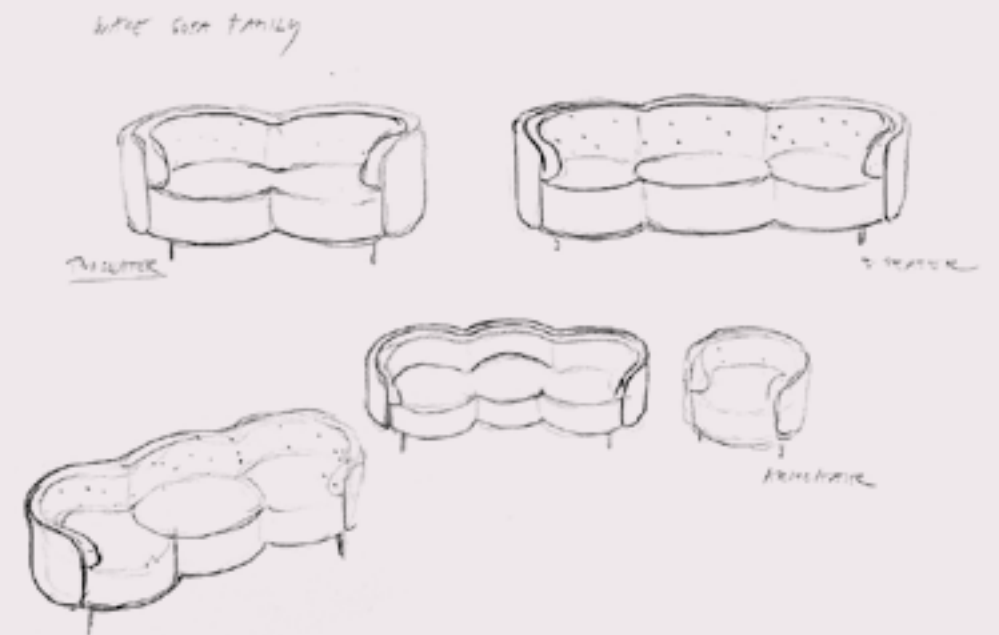
Deep sectional shown in Essential leather.
H79 - W346 - D282 cm
H31 - W136 - D111"
Adore swivel armchair.
Voyage coffee table.

Pumo craft item.
Vortex rug.
Voyage dining table.
Voyage chairs.
Joy pendant lamp.

The back is a triumph of circularity and rotundity, immediately conveying a sense of visual comfort.



Nika Zupanc redefines the world of interior design in her own personal, poetic and distinctly feminine fashion. Her objects defy rationality and create an intimate, emotional and intuitive dimension. Her visual language aims to “communicate things that cannot be said”, pushing back the frontiers of materials and possibilities to breathe life into refined pieces that have been meticulously crafted and curated. This is why Elle USA used the words “punk elegance” to describe her work. Her installations are on display at the most important art galleries in the world and are often the product of partnerships and special projects, like that with the Rossana Orlandi Gallery of Milan. She takes an eclectic approach that bridges the gap between art and design and, over time, this has led her to take on interior-design projects that she follows from A to Z, curating them down to the tiniest detail with a sophisticated aesthetic packed with motifs and references that turn up everywhere in true Giò Ponti style. Her holistic mindset helped to bring about the encounter with Natuzzi, as it is in perfect keeping with the brand's “total-harmony” philosophy. And so, a collection came into being that focuses on waves, their visual impact and the inner mood they create because each piece has been devised for life seen as an emotionally-charged experience and a dwelling for the soul. A collection you can find yourself in, lulled by the reassuring familiarity of the sea and the eternal beauty of Mediterranean nature - a source of shared inspiration for Natuzzi and Zupanc.



“The collection is here to embrace and protect you, to become your true home. Beneath the waves there is always an ocean of peace”.

wave

Wave three-seater sofa shown
in Premium fabric.
H74 - W242 - D98 cm
H29 - W95 - D39"
Wave pouf and Voyage
magazine rack.
Vortex rug.
Voyage dining table.
Voyage chairs.
Joy arch lamp.

Each detail adds
vintage appeal,
starting from the light-
gold finish on the base.



deep

Deep three-seater sofa
shown in Trendy fabric.
H71 - W305 - D131 cm
H28 - W120 - D52"
Deep dormeuse.
Joy floor lamp.
Tide bookcase.
Wave pouf and **Voyage**
magazine rack.
Mermaid mirror.
Sailors mirror.

Deep is a chaise longue
that embraces and
protects you while you
contemplate the passage
of time in peace and quiet.



designed by
Maurizio Manzoni



leaf

With its pristine-looking design and clean lines, Leaf is a celebration of iconic simplicity. Its versatility is enhanced by the detachable backrest cushions - for a comfortable aesthetic that lends itself to endless rearrangements. Abundant proportions and exclusive padding deliver unsurpassed levels of comfort.



The base in solid wood set on metal feet imbues this sofa with a powerful personality.

Leaf two-seater sofa shown in Essential leather.
H82 - W189 - D104 cm
H32 - W74 - D41"
Leaf sectional with end unit shown in Performance fabric.
H82 - W265 - D268 cm
H32 - W104 - D106"
Estro coffee table.
Ding Dong table lamp.
Decorative cushions.
Trullini aromatic candle.
Pumo craft item.





positano

With its generously rugged coastline gently sloping down to the waters' edge, Positano has inspired a sumptuously comfortable sofa. Maurizio Manzoni pays homage to the stylishness and eternal harmony of the Mediterranean refreshed with contemporary flair.

designed by
Maurizio Manzoni

The base in solid smoked oak reveals exquisite detailing in brushed brass.





Positano three-seater sofa shown in Trendy fabric.
H74 - W284 - D94 cm
H29 - W112 - D37"
Clemmie armchair.
Pumo craft item.
Colosseo floor lamp.
Seti rug.
Decorative cushions.

designed by
Mauro Lipparini

The base has been made from solid wood and metal, design details which make this sofa shine in every setting.

cava

With their vivid colours and unique ecosystem, the Bauxite caves are one of the great natural spectacles of Apulia and a source of inspiration for a collection which boasts an extremely visually striking system of modular sectional seats. A system which hinges on the constant aesthetic and functional transformations of its various parts.



Cava three-seater sofa in Trendy fabric.
H82 - W272 - D120 cm
H32 - W107 - D47"
Cava coffee tables.
Urchin vases.
Sophia B rug.
Aromatic candles.
Decorative cushions.



Conversation, companionship and rest with an electric sliding mechanism which allows you to move the backrest to and fro every time based on your specific needs.





With the flick of a wrist, the flip mechanism tilts the backrest, changing it from a vertical to a horizontal position



At the left, with a smoky glass finish.

The **Cava** coffee tables in clear, smoky and bronze glass create extremely refined optical effects.



designed by
Marcantonio

infinito

the poetry
of design

Infinito came into being thanks to the idea of cross-pollination and to an almost impossible challenge - taking the core aesthetic of one of the most powerful symbols for the human race and turning it into an object that has a strong symbolic value for Natuzzi - the sofa.



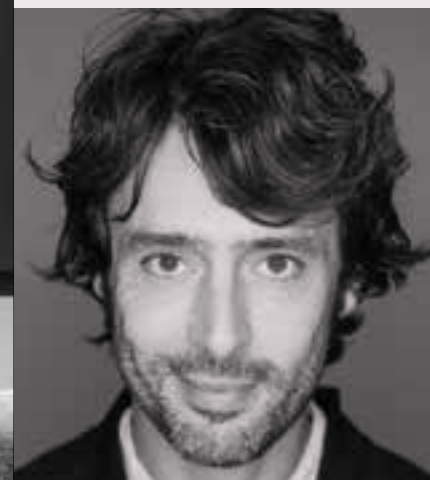
“It is necessary to steer new courses in the design world and seek new directions.”

With Natuzzi, this is what we have done. We put the focus on poetry for our project, turning infinity – a symbol packed with meaning – into a fascinating three-dimensional shape, a sort of sculpture created to help you relax, feel good, feast your eyes and enjoy good company. A sofa for meditating and opening up to inspiration.”

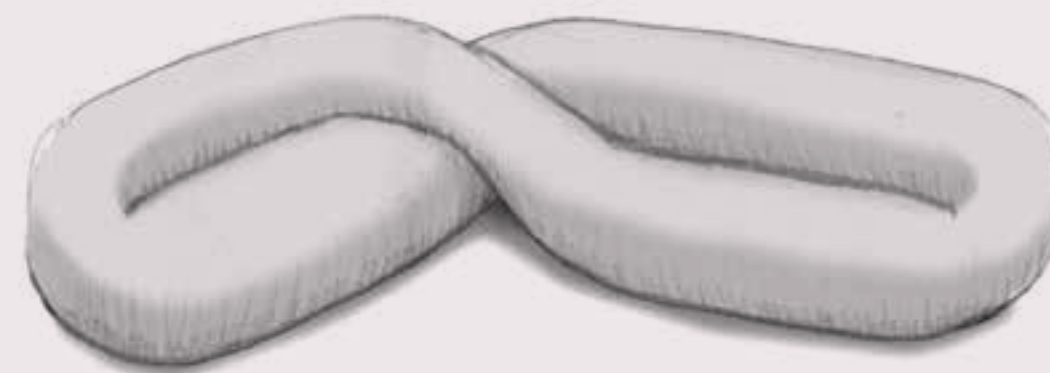


Infinito sofa shown in Premium fabric.
H85 - W300 - D242 cm
H33 - W118 - D95”
Colosseo arch lamp version shown in black chrome.





Marcantonio's research constantly blurs the boundaries between art and design. His personality and work are both a fusion of a love for art and one-of-a-kind pieces; his design objects are meant to be part of an everyday household and their dual nature is bound by his utterly free creative thinking. With a strong sense of humour, a love of nature and his own personal vision of contemporary design, he has produced pieces of work that have already become modern icons. His vision and poetic approach are perfectly summed up by the words: "Design teaches us to draw, but it is from art that we learn how to have ideas. We are crammed with shapes in the design world, and, I think that either we move towards applied design technology, which will always make sense, but that is not my field, or we move towards poetry." He has definitely chosen the latter pathway and he draws inspiration from anti-academic and visionary figures like Ingo Maurer and Gaetano Pesce. Marcantonio sees in them the concept of "impure", crossed-fertilised and playful creativity which ensues from the constant intermingling of the most varied sectors, from pop-art culture to storytales and from primitive art to comic strips, where the differences have their own intrinsic worth and are in contrast with the concept of design purity. This same intrinsic worth has always underpinned Natuzzi's design vision. This is why (for the new Circle of Harmony collection for which design blends are a cornerstone) Pasquale Junior Natuzzi "challenged" Marcantonio and his creative mind for this co-venture with the brand, involving him in a project which is, on the one hand, almost an impossible feat and, on the other, the best way to bring out that marvellous inner world which transpires from each artist/designer's work, imbuing it with an unmistakable unique feel.



"We have transformed the infinity symbol into a curvy sculpture which slides upon itself and becomes a restful sofa".



designed by
Mauro Lipparini

colosseo

A monument to versatility. The seats have even been designed to include storage units which serve as an armrest or a table top, giving rise to a new living-area concept where flexibility merges with the innovative comfort levels of our Triple-Motion function.

Colosseo two-seater shown in Essential leather with high wooden table top.
H75-98 - W291 - D109 cm
H30-39 - W115 - D43"
Colosseo table lamp.
Affresco rug.
Vista Zenitale wallpaper.





colosseo



Colosseo three-seater sofa shown in Stylish leather with low wooden table top and wood panel.
H75-98 - W359 - D109 cm
H30-39 - W102 - D43"
Blossom armchair.
Fil Rouge coffee table.
Luce rug.
Trulli decorative bowl/plate.
Silo vases.



The vast range of solutions also includes free-standing panelling so you can partition off areas in your home or create private intimate corners.



The backrest, footrest and headrest can all be adjusted via the Triple-Motion mechanisms.



designed by
Maurizio Manzoni



oblò

Oblò is the warm generous embrace of a welcoming home. The metal structure girds it - like a belt around a lithe body - bringing to the fore the elegance of its sleek silhouette. In addition, the tubular metal structure acts as a foot, giving the sofa an airy streamlined look.





With immense formal purity, the tubular structure encircles the backrest and armrests, extending to the feet as well.





Oblò sectional with end unit shown in Performance fabric.
H65 - W307 - D225 cm
H26 - W121 - D89"
Orfeo coffee tables.
Pumo craft item.
Orfeo cabinet.
Seti rug.

designed by
Enrique Marti



stan

With its endless number of hidden functions, Stan is the epitome of compact versatility. The size of the seat can be adapted to customer requirements and the headrests can be moved electrically up and down and forwards until you find the right position.

With the performance fabrics, elegance and practicality go hand in hand.





Stan chaise sofa shown in Performance fabric.
H87 - W293 - D160 cm
H34 - W115 - D63"
Stan three-seater sofa shown in Essential leather.
H87 - W206 - D97cm
H34 - W81- D28"
Jade rug.
Pumo craft item.



Headrest and footrest
can be adjusted
separately for
individualised comfort.



Watch Stan
sofa in motion



The incredibly versatile design of the **Stan** sofa allows for personalisation so you can achieve a result that suits your style, space and comfort requirements down to the ground.

Here are some suggested arrangements.



Chaise sofa
H87 - W293 - D160 cm
H35 - W115 - D63"



Armchair
H87 - W98 - D97 cm
H35 - W39 - D38"



Sectional
H87 - W293 - D206 cm
H35 - W115 - D81"



Three-seater sofa
H87 - W206 - D97 cm
H35 - W81 - D38"



Sectional with chaise
H87 - W292 - D378 cm
H35 - W115 - D149"

Allow it to take centre stage and play a starring role in your living area. In any case, it would be a shame to conceal such a gorgeous part of this piece

designed by
Claudio Bellini

botanic

Taking its cues from forms found in Nature as its name suggests, Botanic puts a new spin on the stylish design of the '50s - those sleek lines and that cohesive approach which refashioned the aesthetics of home design - and turns it into a compact pared-back project.



Botanic three-seater sofa shown in Prestige leather.
H80 - W192 - D82 cm
H31 - W76 - D32"
Botanic armchair.
Cava coffee table.
Pumo craft item.
Colossero floor lamp.
Sophia B rug.
Foresta wallpaper.



designed by
Natuzzi Design Center



philo

With its signature quilting (an instantly recognisable sign of fine Natuzzi craftsmanship) and unmistakable design, Philo immediately conveys a sense of hospitality and comfort. It is equipped with cutting-edge recliner functions and our innovative Zero Wall space-saving system.



Watch Philo
sofa in motion

Soft Touch: at the flick
of a wrist, the seat unit
turns into a chaise-longue
waiting for you to stretch
out and relax.





Philo three-seater sofa shown in Essential leather. H78-102 - W306 - D110 cm
H31-40 - W120 - D43"
Logos swivel armchair.
Icon coffee table.
Vico table lamp.
Sophia rug.

The incredibly versatile design of the **Philo** sofa allows for personalisation so you can achieve a result that suits your style, space and comfort requirements down to the ground.

Here are some suggested arrangements.



Two-seater sofa
H78/102 - W321 - D321 cm
H31/40 - W126 - D126"



Sectional
H78/102 - W321 - D321 cm
H31/40 - W126 - D126"



Three-seater sofa
H78/102 - W306 - D110 cm
H31/40 - W120 - D43"



Compact sectional
H78/102 - W321 - D227 cm
H31/40 - W126 - D89"

designed by
Natuzzi Design Center



borgnese

Sumptuously soft with polyurethane and shape-memory-foam padding, Borgnese delivers supreme comfort levels with its adjustable headrests. With an in-line or corner arrangement with or without a chaise-longue, its compact flair will always usher airiness and uncomplicated elegance into any setting.

Available with a base
in solid wood or metal.
Because perfection is
not a detail.





Borghese sectional
with end unit shown
in Essential leather.
H73-93 - W230- D294 cm
H29-37 - W91 - D116"
Chocolate coffee table.
Pumo craft item.
Decorative cushions.

The adjustable
headrests offer ideal
support, allowing you
to relax, read or idly
chat with your guests.



Watch Borghese
sofa in motion





cassia

designed by
Mauro Lipparini



A design-forward and invitingly curvaceous shell. **Cassia** defines the new geometry of comfort.

Cassia armchair shown in Performance fabric with smoked oak feet.



amalia

designed by
Bernhardt & Vella



Sharp geometrical shapes and sleek volumes for an oasis of relaxation and comfort. This is no mirage, it is the **Amalia** round sofa.

Amalia round sofa shown in Premium fabric and set on smoked oak feet.



designed by
Natuzzi Design Center



balance

The perfect Balance between fine Italian craftsmanship and hi-tech comfort - adjustable headrests on each seat, integrated lower-back cushions, recliner functions and an exclusive Audio System (available upon request) with loudspeakers integrated into the sofa which can be activated via Bluetooth.





Balance sectional
with end unit shown
in Essential leather.
H75/95 - W319 - D249 cm
H30/37 - W126 - 98"
Cava coffee table.
Ding Dong pendant lamp.
Pi Greco chairs.
Orizzonte wallpaper.



The exclusive Soft-Touch mechanism allows you to customise your experience and make it your own special haven of relaxation.



Watch Balance
sofa in motion

The incredibly versatile design of the **Balance** sofa allows for personalisation so you can achieve a result that suits your style, space and comfort requirements down to the ground.

Here are some suggested arrangements.



Armchair
H75/95 - W119 - D108 cm
H30/37 - W47 - D43"



Three-seater sofa
H75/95 - W 304 - D108 cm
H30/37 - W120 - D43"



Sectional
H75/95 - W319 - D235 cm
H30/37 - W126 - D 92"



Sectional with end unit
H75/95 - W319 - D249 cm
H30/37 - W126 - 98"



Sectional with chaise
H75/95 - W319 - D 403 cm
H30/37 - W126 - D 159"

designed by
Michele Menescardi



icon

Icon's sumptuously soft silhouette and rounded appearance give it that immense visual comfort that made Natuzzi sofas so unmistakable in the '80s and '90s. A highly flexible system which allows you to create lounging areas that are in keeping with space requirements and your own personal taste.



Icon three seater sofa
shown in Essential leather.
H78 - W232 - D106 cm
H31 - W81 - D42"
Icon sectional with end
unit in Performance fabric.
H78 - W307 - D277 cm
H31 - W121 - D109"

Icon coffee table.
Urchin vases.
Colosseo floor lamp.
Phantom sideboard.
Affresco rug.
Decorative cushion.





The decorative trim along the edge of each seat unit. Natuzzi's superiority emerges from a detail.

The seat units are covered on all sides so each one can be used separately as well.

designed by
Natuzzi Design Center



capriccio

It is a sofa bed with a square compact silhouette which has been fitted with our exclusive *Pronto Letto* mechanism; at the flick of a wrist, the sofa turns into a bed and then back again, while also boasting a hidden storage unit to stow away pillows and bed linen. An ideal solution for urban spaces.



Capriccio is a sofa bed with a square compact silhouette which has been fitted with our exclusive Pronto Letto mechanism; at the flick of a wrist, this mechanism turns the sofa into a bed and then back again, while also boasting a hidden storage unit to stow away pillows and bed linen.

Capriccio sofa
shown in essential leather
Saturday coffee tables
Colosseo floor lamp



Capriccio is an extremely versatile solution for urban spaces thanks to its dual nature, provides a new refreshing take on the idea of comfort, created by a brand which has turned comfort into a lifestyle.

The metal feet are available in various finishes and with contrasting piping as an option.





dining

the harmony
of new everyday
habits.

In the Mediterranean culture, the places in which we entertain our friends and families, sharing thoughts, emotions, glances, food, wine and wonderful moments, are very special. And sitting around the table is always enriching, joyful, a celebration. In addition to all of this, the new normal brings with it the need to make the most of our spaces, with tables that can be transformed into well-equipped desks and multifunctional work surfaces, changing shape and size depending on the type of "meeting". The Natuzzi Italia dining room collections are the result of in-depth stylistic and functional research, experimentation with innovative and sustainable materials, respect for the relationship between tradition and local culture. Chairs and tables, storage units and sideboards, give rise to infinite harmonious combinations and dynamics perfectly attuned to the most fluid of lifestyles.

designed by
Marcel Wanders studio

adam

A timeless elegance and design distinguishes the Dining Adam, an important protagonist of the Natuzzi Italia Dining area. Adam dining table is characterized by natural colors and elements such as wood and new innovative stone finishes that are skillfully and elegantly mixed with the oldest craft history of Puglia. An offer that is the result of stylistic research involving shapes and materials.



Adam Elliptical-shaped dining table available in two sizes, suitable for 6 up to 10 people.
L280 - P100 - H75 cm
L110 - P39 - H30"

Edgar chair



Adam dining is a new organic shaped product available in two sizes where natural colors, wood and new innovative brushed lecce stone finish are skillfully and elegantly mixed.

The brushed lecce stone finishing is an innovative stone-effect texture and it is made with natural and recycled materials that create natural, unique and valuable surfaces giving each element an iridescent and distinctive note.

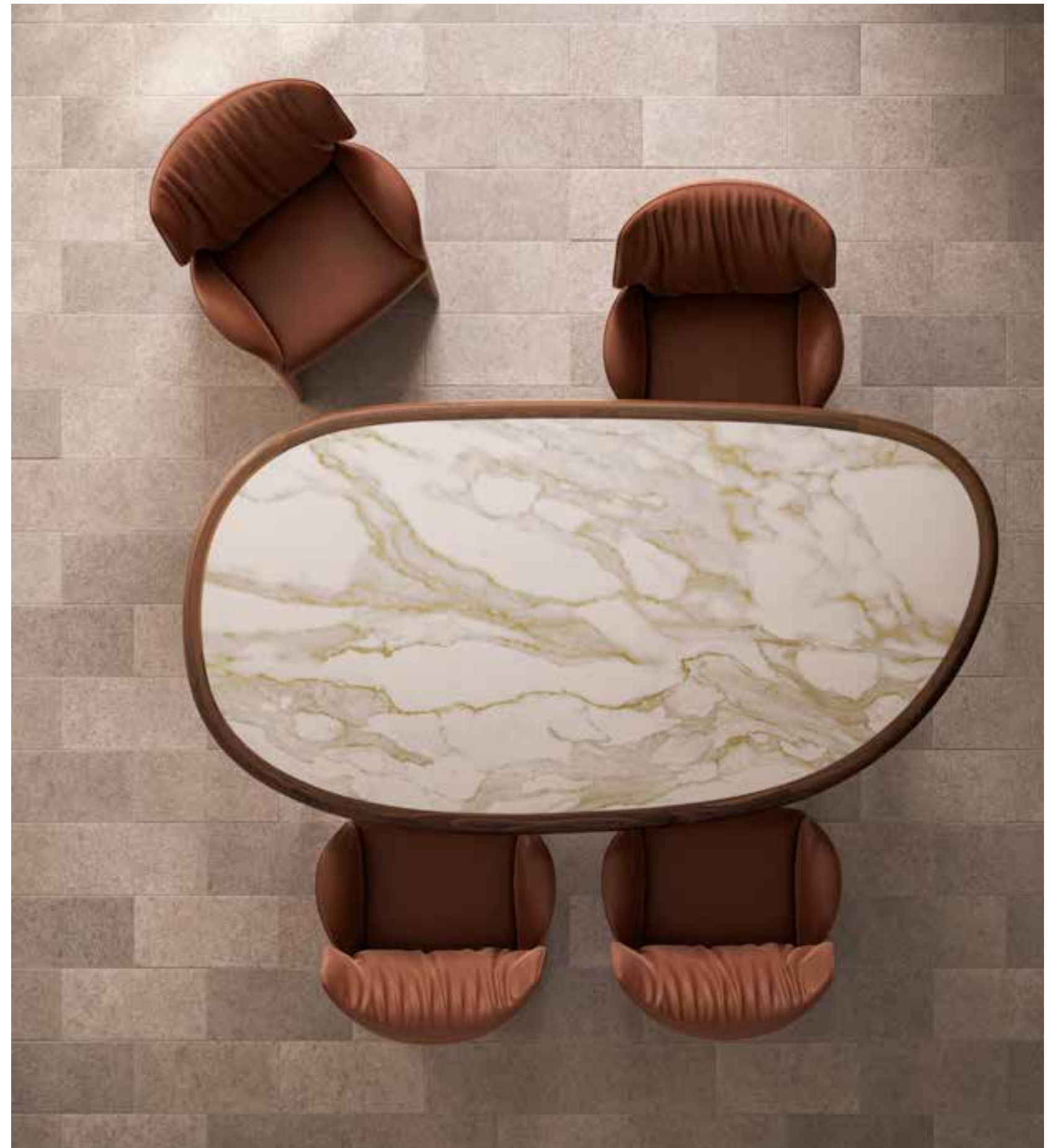


designed by
Massimo Iosa Ghini

gutta

Gutta is a triumph of organic form, with its fluid, sinuous lines and a surface that resembles an uneven mirror of water reflecting everything around it. The new domestic design approach looks to nature as a model of maternal, inclusive beauty, never aggressive or edgy. A 'human' beauty, more in harmony with who we are.

The timeless elegance of the table, available with a round or oval top, breaks the mould and redefines the boundaries of the aesthetics applied to design.





Gutta dining table shown with a structure in solid American walnut and a top in Calacatta Gold marble. L220 P118 H75 cm L86 P46 H30"
Beat armchairs.
Circle pendant lamp.

A lightweight structure in solid walnut emphasises the sinuous shapes of the table, starting from the legs, which seem to be modelled by function, and ending with the profile of the top.



beat



designed by
Mario Lipparini

The **Beat** armchair welcomes us with its generous seat. Enveloping us like a corolla of petals, reassuring us like a nest.

Baet armchair shown in Nabuk.



designed by
Claudio Bellini



ombra

With its weight-bearing asymmetrical leg in innovative concrete-effect Bio-mortar, a top with a wooden finish and a gleaming metal base, Ombra bespeaks its exquisite workmanship. A table suitable for both modern living, dining, and office spaces with a strong identity.

Ombra dining table shown with a pewter steel base, asymmetrical frame covered in light-grey concrete-coloured decorative bio-Mortar and a top in tobacco-brown ash wood.
L240 P120 H75 cm
L 94,4" P47,2" H 29,53"
Vesta chair.
Dami pendant lamp.
Fortuna sideboard.
Sophia B rug.



designed by
Nika Zupanc

voyage

Voyage is half-table and half-sculpture, with a sensually sleek silhouette which will steal the scene wherever you put it. The top in Stardust - Terrazzo Stone - features a rare mixture of iridescent marble which takes its cues from the star-studded skies on balmy summer nights. An extraordinary object which resonates on a deep level.



Voyage dining table
shown with light-gold
metal base - top in
Stardust Terrazzo Stone.
L 220 P110 H 75 cm
L 86.61" P43.31 H29.53
Voyage chair.
Joy pendant lamps.
Mermaid mirrors.
Adore armchair.
Vortex rug.
Pumo craft items.





voyage

designed by
Nika Zupanc



Sinuous and glamorous,
the **Voyage** swivel chair
completes the dining area
of the Deep collection.

Voyage chairs shown in
Stylish fabric with base
made in steel with a matte,
light-gold satiny finish.

voyage



Voyage Dining table with a light-gold metal base and a top in a Gold & Glass colour palette with a personalised design.

designed by
Mauro Lipparini



campus

Campus features an ageless design with an acutely contemporary aesthetic. Exquisite materials and sleek lines unite to create sheer perfection. Its elliptical top available in several shape and size finished with either marble or ceramic will take centre stage in the living area, lending itself effortlessly to a whole array of different décor styles.

Campus dining table
shown with a top in
Calacatta Green marble
and a glossy champagne
metal base with
ash-wood details.
L 210 - P110 - H75cm
L 82 - P43 - H29"
Valle chairs
Campus sideboard
Pumo craft items
Colosseo arch lamp
Sophia B rug.

Campus dining has
an extraordinary
scenic effect the use
of marble and ceramics
in large format for
its tops, together with
noble stone, technical
materials and metals.
A design with a
unique and distinctive
personality, but at
the same time elegant
and refined.



campus

Valle chairs.
Campus TV unit.
Dami pendant lamp.



A round version is designed to maximize any space and offer greater flexibility of seat and it's ideal for 6 - 8 seats.

A large rectangular version is an ideal solution to accommodate more people and to be the undisputed protagonist of the room.

Campus round dining table shown with a top in Macchia Vecchia marble and a glossy black chrome metal base with eucalyptus wood. Ceramic is a material suitable for various environments thanks to its ease of maintenance, and resistance.

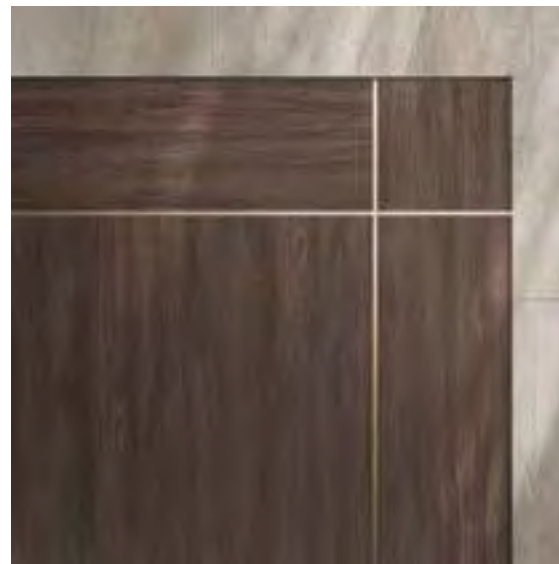
The warmth of wood
and the glint of metal
create a strikingly
unique counterpoint to
each other.

designed by
Manzoni&Tapinassi

kendo

Merging Mediterranean
harmony and Eastern balance,
the Kendo table will contribute
to the creation of a refined and
extremely characterful dining
area. The mixture of solid
wood and metal gives life to
an unparalleled interpretation,
a perfect blend of artisanal
artistry and deft design.

Kendo dining table shown
with legs in solid smoked oak
wood with a brass metal insert.
Top in smoked oak.
L 260 P 100 H 74 cm
L 102.36 P 39.37 H 29.13
Ambra chairs.



ambra

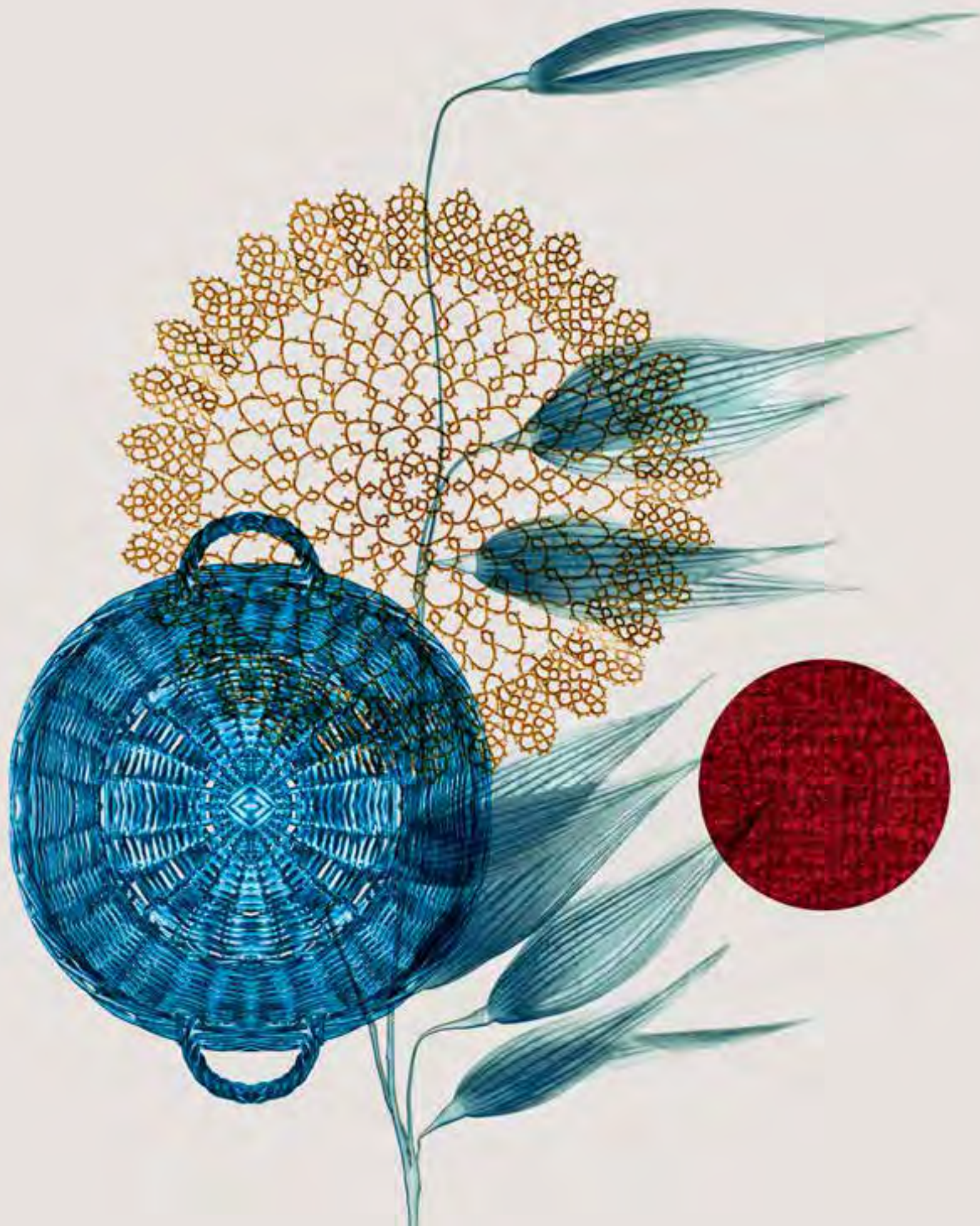
designed by
Natuzzi Design Center



Visual softness and great comfort. **Ambra** - an irresistible invitation to take a seat.

Ambra chairs shown covered entirely in Essential leather.





bed room

harmony,
a dream that
comes true.

For this most intimate and personal of spaces, Natuzzi Italia has developed a collection of beds, bedside tables and chests of drawers that perfectly encapsulate its expertise and vision: the value of Made in Italy artisanship and processes that respect the environment, the exclusive comfort that has made it a household name all over the world, attention to detail, quality materials - from the best wood, originating from correctly and responsibly managed forests, to the finest leathers and through to the most exclusive and innovative fabrics, the fruit of synergies with the most cutting-edge businesses in the field of sustainable textile design. To create a space that combines the real with the ideal, a collection of dreams that inhabit reality.

campus bed
shown with headboard
in suede leather with
unevenly woven pattering
L108 - P210 - HP217cm

campus panca
shown in suede leather
with unevenly woven
pattering
L120 - P42 - H42cm

designed by
Mauro Lipparini

campus

Campus bed draws its aesthetic origins from the extraordinary craftsmanship of its broad weaves made of leather straps woven orthogonally in a modulated rhythm: a confirmation of Natuzzi Italia's high quality craftsmanship and attention to sartorial detail. A geometric purity that gives a pleasant sensation, a true invitation to relax. Elegance, exclusivity and uniqueness make Campus an iconic, representative and familiar bed, and at the same time a distinctive protagonist of home furnishing.





campus Night dresser
L170 - P55 - H74 cm
L67 - P22 - H29"

campus exagonal bedside
table
D47 - P42 - H52 cm
D19 - P17 - H20"

The Campus night program combines furnishings and bed and creates a new interior proposal with dressers and elegant and functional compartments and bedside tables that rewrite the function of the bedroom and express the details of the craftsmanship with a contemporary key.

The elegant design of Campus bed finds its maximum expression in the headboard, softly padded and embellished by suede leather with headboard in suede leather with unevenly woven patterning. Cushions can be upholstered in leather or fabric, and are removable.



designed by
Patrick Norguet

ema

Poly is a furniture collection designed to create a new, multi-purpose harmony between relaxation and the work space. A transition towards fluidity, with designs such as Ema - a bed that rewrites the rules of domestic life, the essential feature of a sleeping area where the most conventional forms of visual comfort meet the demands of contemporary living.



Ema combines a linear design with aesthetic details that amplify the concept of relaxation. Four sizes are available, depending on varying requirements of space.

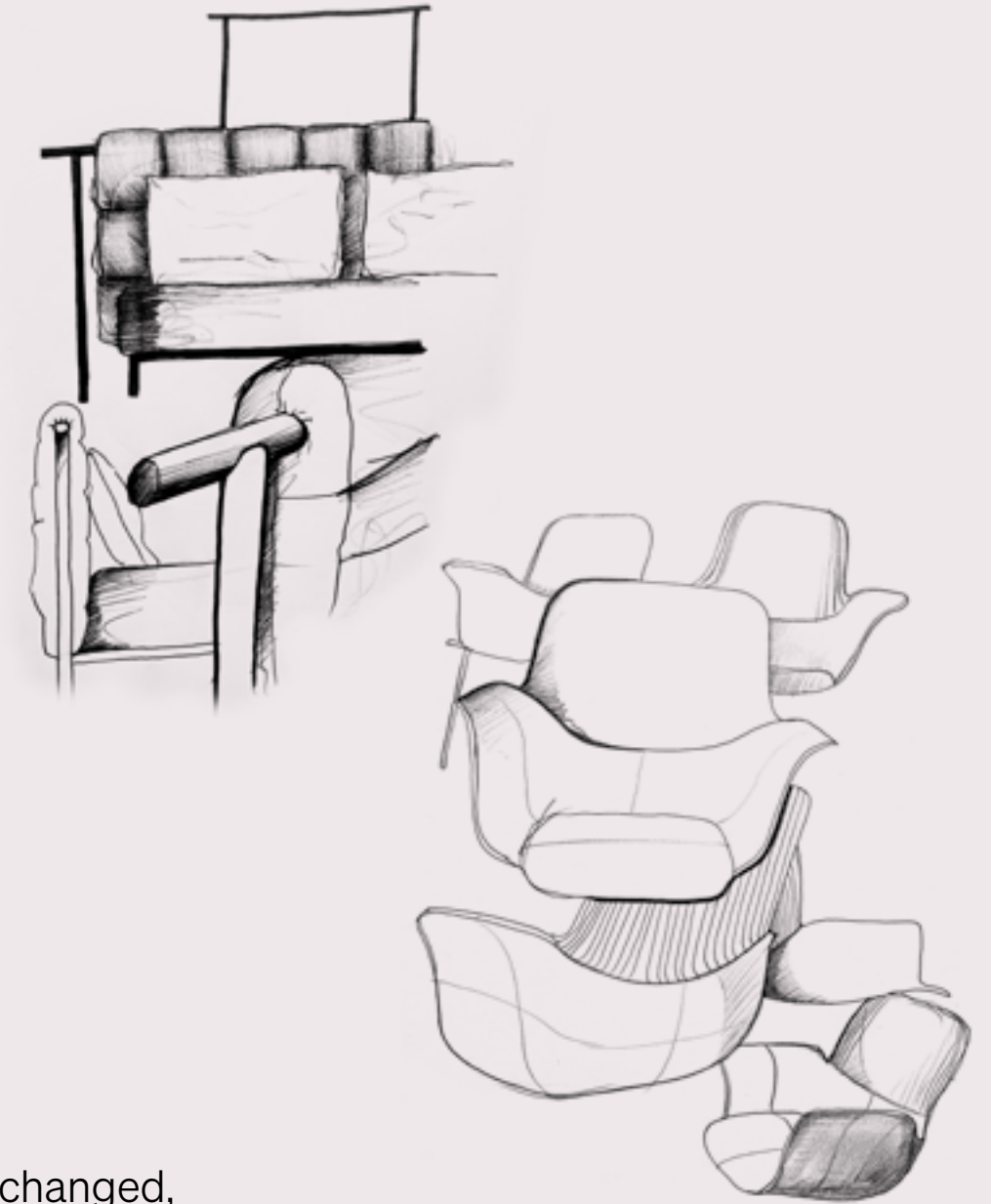
The headboard is padded and enriched with stitching that also appears on the bed frame, which emphasises its softness.

Ema bed shown in Trendy fabric.
H142 - W232 - D218 cm
H56 - W91 - D86"
Labirinto bedside tables.
Sophia B rug.





Patrick Norguet approaches objects and design from a graphic perspective. His 'practical' approach, based on his industrial and design studies in Paris (ESDI), is what defines the unusual profile of this constructive rebel. In 2000, he founded his Paris studio, immediately establishing himself as a key figure on the international scene. His greatest passion is dialoguing with manufacturers and discovering their expertise; the creative impulse refined by technical constraints. He does not follow trends, but seeks to design relevant, modern products that stand the test of time: "A well-designed object, an object created through generous collaboration, is timeless."



"Priorities have changed, especially among the younger generation - people are looking for products that have good energy, and tell a lifestyle story."

designed by
Claudio Bellini

Allow it to take centre stage and play a starring role in your bedroom. The headboard has been finished to a high standard on both sides so it can be showcased in the middle of the room.

briq

Available in four different sizes with leather or fabric coverings, Briq is designed to meet any space requirements. It scores high on versatility and functionality, as evidenced by the storage unit with two opening positions so you can easily access all parts of the bed.



Briq bed shown in
Essential leather.
H113 - W230 - D236 cm
H44 - W91 - D93"
Svevo bedside tables.
Vico lamp.
Foresta wallpaper.
Sophia B rug.



designed by
Bernhardt & Vella

fenice

Fenice is the bed which effortlessly brings together aesthetics and function in a triumph of finesse. The slightly tilted headboard provides a highly comfortable posture for reading and, obliquely inclined as it dovetails with the bedframe, it also creates an elegant geometric detail.

Cosseted by the big plush cushions on a spectacular-looking and comfortable headboard.



Fenice bed shown
in Performance fabric.
H95 - W198 - D231 cm
H37 - W78 - D91"
Melpot pouf.

Fenice chest of drawers
and bedside tables.
Galileo table lamp.
Sophia B rug.



The storage-unit mechanism has two different opening modes: the first one allows you to make the bed without bending your back, while the second one allows you to effortlessly stash away linen and any belongings in the furthest corners.



Piuma bed shown
in Essential leather.
H94 - W218 - D243 cm
H37 - W86 - D96"
Mondrian bedside tables.
Vico table lamp.
Sophia B rug.

designed by
Claudio Bellini

piuma

Sumptuously soft and airy in appearance, Piuma is lifted from the ground by its open base almost as if it were floating. Suggestive of two pillows joined in the middle, the headboard offers high comfort levels. It has been trimmed around the edge with an exquisite ruffle detail lined on the inside with plush velvet.



sleeping in natural harmony



Designed and entirely made in Italy, Natuzzi Italia's beds are a benchmark for those seeking the utmost harmony and quality, even when sleeping. Their perfect match are the innovative mattresses developed in partnership with Coco-Mat, a pioneering company. Completely artisanal, totally natural and ergonomic, these mattresses are essential components for an extremely comfortable and restorative night's sleep.



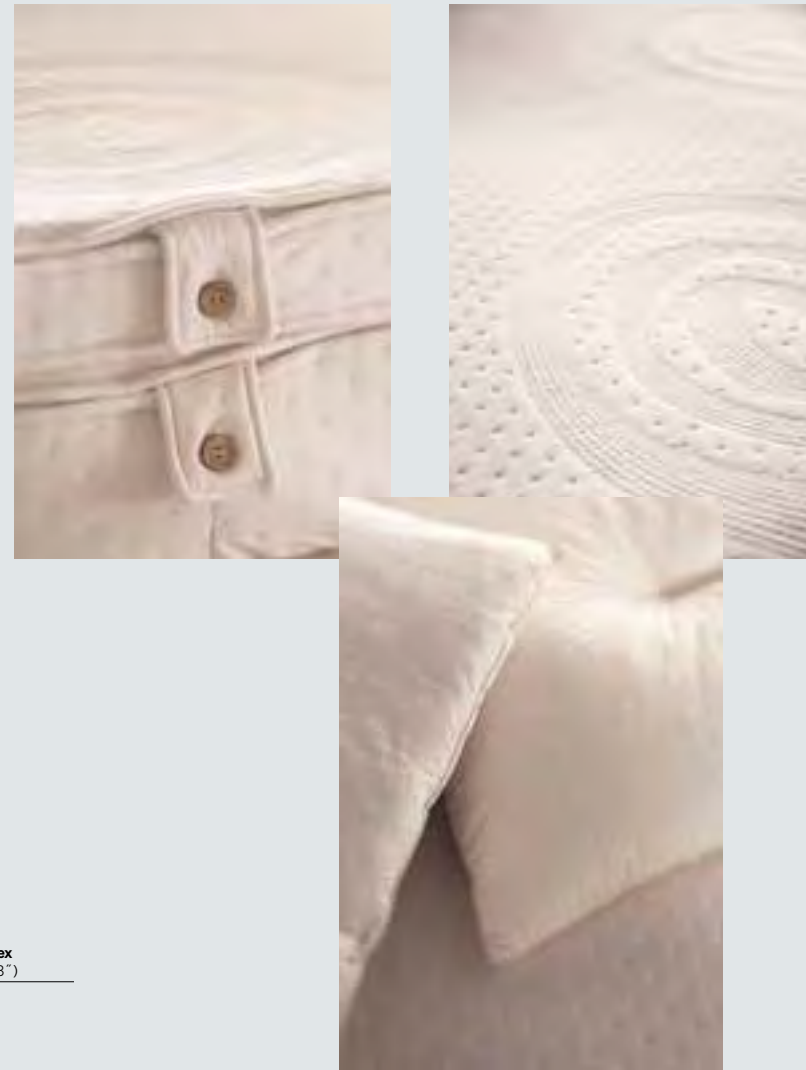
natural latex 25 mm (0.98")
 rubberised coconut fibre 20 mm (0.7")
 natural latex 60 mm (2.3")
 rubberised coconut fibre 10 mm (0.39")
 seaweed
 natural latex 60 mm (2.3")



natural latex 25 mm (0.98")
 seaweed
 natural latex 25 mm (0.98")
 rubberised horsehair 10 mm (0.39")
 natural latex 25 mm (0.98")
 rubberised cactus fibre 10 mm (0.39")
 rubberised coconut fibre 10 mm (0.39")
 seaweed
 natural latex 60 mm (2.3")
 rubberised coconut fibre 10 mm (0.39")
 eucalyptus leaves
 seaweed
 natural latex 60 mm (2.3")



natural latex 60 mm (2.3")



Atlas mattress

Handcrafted with care using Nature's finest materials to provide maximum comfort and create the conditions for rest. Atlas will lend itself to any individual preference and you can choose between a springy and less springy side. Suitable for all body types.

materials Natural Latex, Rubberised Coconut Fibre and Seaweed.

elasticity Different on each side – Soft and firm.

height ± 18 cm (7")

cover Washable, 100% cotton.

Proteas mattress

Exquisitely handcrafted, Proteas is our most exclusive and intricately designed mattress, made entirely from natural materials. Made to embrace each curve of the body and provide optimal support to heavier parts while ensuring maximum springiness. Suitable for all body types.

materials Natural Latex, Rubberised Coconut Fibre, Horsehair, Eucalyptus leaves, Cactus Fibres and Seaweed.

elasticity Different on each side – Soft and medium.

height ± 25 cm (9.8")

cover Washable, 100% cotton.

Iviskos top mattress

A thick layer of natural latex which provides optimum springiness and comfort. Works in combination with the mattress to improve the sleep experience. Suitable for all body types. The cotton covers can be easily removed and washed for maximum hygiene.

materials Natural Latex.

height ± 6 cm (2.3")

cover Washable, 100% cotton.

materials

Natural rubber

A colloid, milky fluid which undergoes a special process to become soft elastic foam. The name given to rubber by indigenous Equator tribes was "caoutchouc", from the words "caa" (tear) and "ochu" (tree), because of the way it is collected.

Coconut husk

The husk of the tropical coconut fruit is coated in strong, resilient fibres which are sprayed with natural rubber, shaped into layers and used on our products. Coconut fibres are known for their durability and insulating properties.

Seaweed

Over the years it has been used for multiple purposes, from a medical remedy to insulating material. Once dried, we use it for its slowly-released scent of iodine. Iodine is known to benefit the breathing system.

Cotton

Used to make soft comfortable clothes and other textiles, cotton has a long history. Light, fluffy and naturally hypo-allergenic, cotton is the undisputed king of all our fabrics.

Wool

Although woollen fabrics are commonly thought to be more suitable for colder climates, in fact, wool is perhaps the only natural material that can keep us warm in winter and cool in summer, thanks to its insulating properties.

Eucalyptus

The tall eucalyptus tree is well-known for its shade and its healing properties. The essential oil distilled from its leaves has a refreshing smell and is a natural remedy, beneficial for our breathing system.

Horsehair

Over the ages it has been used to make brushes, strings for musical instruments, and even toothbrushes. Horsehair is naturally waterproof and can absorb humidity to create a dry environment.

Cactus

An excellent survivor in any environment, this exotic plant has strong and durable fibres which can regulate humidity and maintain a dry environment.

Lavender

A fragrant shrub, famous for its sweet scent and beneficial remedies, lavender is widely used in cosmetics, perfumes, balms and medicines. Its seductive aroma is known to have relaxing effects.

Down

Down has been associated with dreamy sleep due to it being lighter-than-air. Delightfully soft, it keeps us warm, thanks to its inherent ability to let air pass through, while keeping temperature levels stable.

pillows

Sithon I natural latex flakes.

Optimal head and neck support. Suitable for all body builds. Fully customisable. 50 × 70 cm.

Sithon III duck feathers & down.

Feather-light smoothness. Suitable for lighter weights. 50 × 70 cm.

Sithon V pure virgin wool.

Hypo-allergenic. Enhanced head and neck support. Suitable for all body builds. Customisable. 50 × 70 cm.

Narkissos I natural latex flakes.

Ideal for those who sleep on their side. Optimal head and neck support. Suitable for all body builds. Fully customisable. 50 × 70 cm.

a soft, warm, silky embrace

Our dream begins in Apulia where natural elements are transformed into light, depth, warmth, and colour. Then they take shape, filled with substance, matter, and more. They absorb culture, tradition, and passion. Understated luxury evidenced by attention to detail and the sophisticated craftsmanship of the finest-quality yarns. All the most up-to-date shades, weaves and a blend of traditional workmanship and modern techniques - these are just some of the typical features of our matching bed linen, blankets and decorative cushions.

Bed Linen

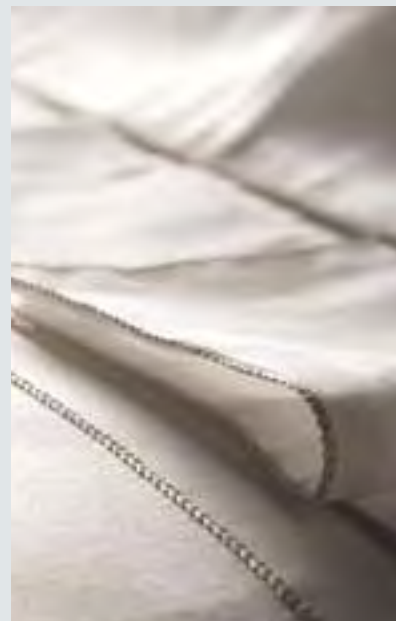
Timeless elegance and seduction. Natuzzi Italia's colour-coordinated bed linen expresses all the excellence of Italian design in a sartorial collection packed with exquisite details. In pure superior-quality cotton percale or in pure linen, they are finished with special hand-crafted techniques.

Cushions

In a stunning blend of Italian tradition and contemporary design, Natuzzi Italia presents an extensive collection of decorative cushions. Available in a variety of dazzlingly bright colours and in elegant natural materials. Natuzzi Italia cushions are designed to add an exquisite and harmonious personal touch to the rooms of the home.

Blankets

Pleasing to the eye and warm to the touch, Natuzzi Italia blankets convey an authentic experience of taste and style. In pure cashmere or in 100% merino wool, they are the ideal companions for curling up on the sofa on cold winter days, also doubling as decorative furnishings for your home. The superb quality and special properties of the fibres make these blankets a perfect gift for important occasions.





the place of harmony

a place to enjoy the true taste and intensity of the Mediterranean atmosphere

“All that inspires us becomes form, design and objects. And it is our pleasure to tell it, show it and share it all”. Pasquale Natuzzi

The Natuzzi Italia store is the place where this happens every day: the setting where the brand’s story and image become customer experience, the centrepiece of a multi-sensory event revolving around Italian lifestyle: the blown-up images of Apulia meld with the collections it inspires, while home fragrances and essences of Mediterranean plants mingle with the aroma of freshly-brewed espresso. The new Natuzzi vision no longer contemplates stores that specialise in products, but places where we celebrate harmony and where the classic sales process coexists with cutting-edge technology.

Natuzzi is the only player in the industry that can offer a completely new shopping experience, through a combination of innovation and creativity. The Natuzzi Augmented Store, for example, is a space where everything that a physical store has to offer is vastly amplified by Mixed, Augmented and Virtual Reality. This new shopping experience transports

the customer to a virtual showroom where they can access the entire Natuzzi Italia range, view products as if they were real, in 1:1 scale, and interact with them by changing colours and finishes. This venture has won the prestigious Retail Week Award. Natuzzi Italia, as a lifestyle brand, is forward-thinking in the way it builds strong and lasting relationships with its customers, continually seeking the best ways to accommodate them and offer them a unique and memorable shopping experience. That also means calling on the best specialist staff – architects, interior designers, consultants – who can interpret their desires in the various furniture design phases and transform them into “bespoke” solutions, customised and worked out to the last detail. It means cosseting, pampering and surprising them right until the end, when we make a “white glove delivery” of the chosen item to the customer’s home, elegantly packaged and arranged with all the attention it deserves. Because the high quality of the “Natuzzi experience”, what we call retail excellence, is just as impeccable and refined as its collections.

and soul matter



**Natural matter
has always been
our passion.**

Our fathers, grandfathers and great grandfathers took the same impassioned approach when they shaped our splendid surrounds - our place of birth and homeland, our local area and country. Following in their footsteps, we apply ourselves to the task with love, dedication and reverence because this matter is alive and possesses a soul. It acts as an extraordinary source of inspiration for our Natuzzi Italia collections. The beauty of matter is brought to the fore in endless combinations of form and color, artfully defined by the Natuzzi Style Center and tirelessly studied in a quest for perfect harmony: leather and fabrics are carefully counterpointed by unfinished wood and glossy lacquered surfaces, superlative marbles contrast with hardened steel and the warmth of natural wood is set off by glass and metal with a shiny or satiny surface. This unique heritage translates into a vast range of immense worth. A country of marvels to be explored together with our interior designers in the Natuzzi Italia stores as your "place of harmony".



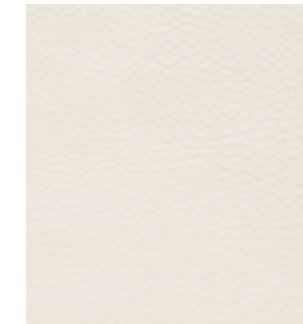
The pleasure of leather.

Natuzzi and leather have always gone hand in hand. This natural affinity has been part and parcel of the success of the Natuzzi collections since the very beginning. Imitated in vain by our competitors, Natuzzi leather is a benchmark for the industry and recognised for its superiority all over the world. Its beauty, suppleness, colour and even its scent have raised the bar in terms of visual elegance and pleasure for the senses. Being a living material, leather literally breathes. And it does not feel the need to disguise its natural markings. As a matter of fact, it puts them on proud display, proffering them as incontrovertible proof of its authenticity. At Natuzzi, this kind of worn leather forged by nature is (aptly) called Natural. It is a source of pride for our experienced master tanners who enhance each detail with consummate skill, relying on an exclusive tanning process developed over the course of 60 years. The leather is not only beautiful to look at, it has also been processed to meet European environmental standards which are amongst the most stringent in the world. This is why it offers a guarantee of complete non-toxicity and durability over time. But the advantages don't stop here. To cope with the many challenges of daily life, you can count on the practical nature of Protecta leathers - the ultimate way to enjoy sofa lounging without worries. An invisible protective layer makes them incredibly hardwearing whilst preserving all their natural beauty. Which ensures total peace of mind while children and pets get on with doing what they do.



Essential

The ultimate choice for lovers of leather and its undeniable allure. Not only does this material withstand the test of time, it actually looks better as the years roll by. A wide array that is bound to satisfy the whole gamut of style and usage requirements.



Stylish

A selection marked by a strong focus on style. With fashionable hues and innovative designs, it explores inspirations and trends coming from all over the world. A perfect way to elevate your sofa with grit and personality.



Prestige

Leathers made for customers who want exclusive coverings and timeless elegance. They embody all that Natuzzi stands for not only in terms of quality.



Fabrics and microfibres. The “Natuzzi touch”.

That it is a Natuzzi fabric is immediately apparent from its touch. It is such a delight to the senses that it is almost impossible not to stroke it. The vast choice available means that everyone will be able to find the covering best suited to their home and lifestyle. Motifs and precious patterning are etched on linen, wool, silk and cotton which entice with their natural allure. Viscose, velvet and microfibre astound with their tactile texture while ensuring immense resistance to both washing and wear and tear. A world where the quality of natural materials goes hand in hand with the innovative nature of hi-tech fibres and outperforming fabrics enhanced with exclusive technology which coats each fibre with an invisible film, locking out dirt and allowing for the easy removal of stains. Fabrics which are safe, ecological and OEKO-TEX® Standard 100 certified, meaning that they boast an international guarantee of total fibre-and-textile-product sustainability. Fabrics designed to help you enjoy life – and your sofa – together and without a care.



Smart

Fabrics that will suit any setting, whether it is classic or modern, and which have a huge colour palette that is easy to match and practical to use.



Premium

A top-of-the-line premier-quality edit for the most discerning customers. Ageless fabrics that bring to the fore the beauty of the products, imbuing their surrounds with an exclusive aura.



Trendy

Natuzzi Italia seeks out new fashion and design trends from all over the globe and puts its own spin on them. New sophisticated bold patterns come into being, expressing instantly recognisable, personal and spirited décor styles.



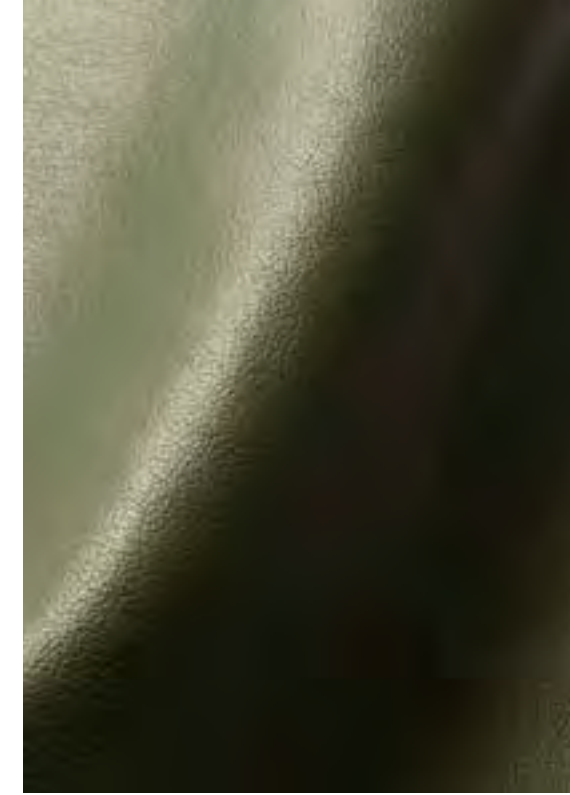
Performance

Natuzzi believes that comfort means enjoying life without having to worry. This is why we have developed a range of innovative fabrics that allow you to easily wipe away stains, using just water and mild soap. Our exclusive technology coats each fibre with an invisible molecular film which locks dirt out. A shield that not only makes the fabric stainproof, scratchproof, tearproof and antistatic, it also makes sure that the environment is respected (there being no PFCs or perfluorocarbons). The Performance fabrics are the innovative part of the Natuzzi coverings catalogue. They retain all the beauty and durability of the original, yet have a more practical surface for cleaning which also repels fur. So, dogs, cats and children can do their worst and you have no need to fear.

- Water-and stain-resistant
- Washable with just water
- Greater resistance and durability
- Protection from mites & bacteria
- NO PFCs (Perfluorocarbons)
- Pet hair-resistant



Discover the practical nature of Performance fabrics



Natuzzi Eco-Fiber Collection. Another step forward for the Planet.

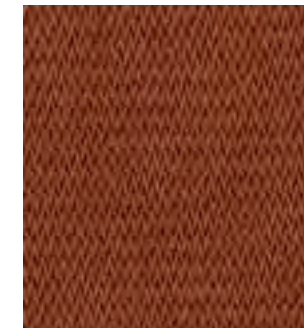
Craftsmanship and innovation, driven by uniqueness. Made from bio-based and recycled materials, our Eco-Fiber Coverings Collection is a step towards a more responsible future. A milestone on Natuzzi's sustainability journey.

Made from plants, paper, boiled wool, recycled materials, to reduce the impact on the environment. Made with passion, a powerful sense of responsibility and our in-depth knowledge of technology to make these eco-fibers at a level of quality that is on a par with everything else we produce.



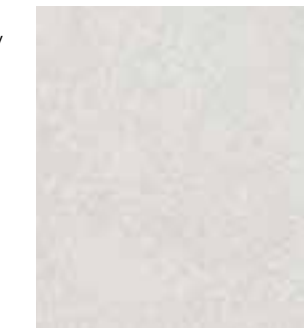
ByBorre®

An innovative 100% eco-friendly 3D™ fabric, exclusively created for Natuzzi Italia by the Dutch textile innovation studio BYBORRE. In addition to being aesthetically striking and exceptionally comfortable, with a surprising materiality, the fabric stands the test of time.



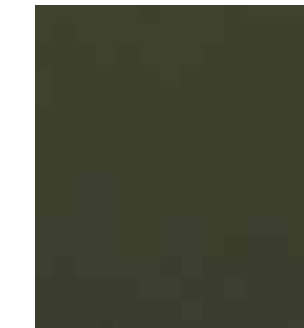
Origami

A fabric composed mainly of paper fibers – an environmentally friendly and 100% natural sustainable product – combined on the back with a chenille fabric with a honeycomb weave. Natural and durable, with the feel of linen but with a more pastel effect. Origami fabric has inherent flame-retardant qualities due to the paper that does not burn, but quickly turns to ash.



Vello.

Our exclusive ecofriendly fabric strongly connected with the culture and territory of Puglia: simply sheep's wool, made from 50% wool and 50% acrylic yarn. An incomparable design and a natural feel that only nature itself can provide. The fleece is not treated other than washed.



Gaia

Unlike fossil fuel-based alternatives, Gaia uses content that is organic, plant-derived sources. A result achieved by-and GMO-free grain and other food products supported by textile substrates of natural origin or recycled materials. All raw materials are guaranteed by specific certifications, such as FSC-certified viscose that comes from sustainably managed forests. Other ingredients are added to be sure that the new material achieves the required standard of quality and aesthetics.



Wood. Beauty in our neck of the wood(s).

For wood too, superlative quality standards stem from fine workmanship and stringent controls right across the production chain. Skilled cabinetwork (a jewel in the crown of Italian design from Gio Ponti onwards) reaches a pinnacle in the Natuzzi Italia collections which offer a broad array of finishes with exquisite detailing, but also extends to more modern furnishing styles. The timeless elegance of natural wood meets the edgy zeitgeist of lacquered wooden surfaces. Tables, chairs, sideboards and bookcases are not only versatile, but emanate warmth and are delightfully tactile. So that the chicest houses in the world can showcase a material whose beauty will never wane.



Marble. The preciousness of Nature.

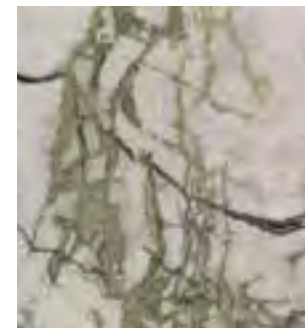
The marbles used for Natuzzi furnishings reflect the natural and ancient beauty of precious and elegant materials. Each vein and imperfection tells of this beauty. Quality, design and high aesthetic value meet in our products, breathing life into real masterpieces. From the rich colour and dense texture of Dark Emperador to the black beauty of Nero Marquina with its white-and-grey veins, the luxurious and sophisticated Travertino and the Marmo di Carrara chosen by Michelangelo for sculpting his masterpieces, all our marbles perfectly encapsulate our philosophy and commitment to make objects that last. And our designers use these stones to striking effect with exquisite contemporary flair, making sure that our products are instantly recognisable and in a league of their own.



Black Absolute / Black Granite
It is one of the darkest varieties of natural stone on earth. The dark-tone black Granite is called Absolute Black Granite. Granite is mostly used for external flooring, wall cladding, counter tops and vanity tops. Stone of African origin (Zimbabwe). Our tops have a matte and brushed finish achieved with specific diamond brushes. The surface has been enhanced with a final water-repellent treatment.



Antigua Green Marble
This marble has a green background with white veins and occasional nuancing that tends towards yellow. This stone features fairly regular patterning. Green Antigua Marble is a kind of green marble quarried in Iran. It's also called Antigua Green Marble, Persian Green Marble, Green Antigua Persia Marble, Iran Antique Green Marble, Green Persia Marble, Classic Green Marble or just Green. The Antigua Green Marble used for our products has a matte brushed finish. The surface has been enhanced with a final water-repellent treatment.



Glossy Calacatta Green
Calacatta Green is a precious marble with a white background and veining in a various shades of green. There is marked unevenness in the distribution of the veins. Slabs can have bold veining on some parts and be clear on others, making for a distinctive irregular appearance. It is of Asian origin and is specially processed in Italy. Being a marble of the sedimentary sandstone category, it also contains various types of crystals and grey stones distributed in a non-homogeneous way; these must be considered to be one of the qualities of this kind of marble. The top surface is glossy. The surface has been enhanced with a final water-repellent treatment.



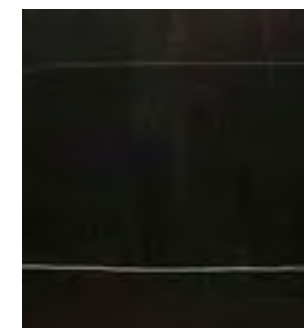
Matte Antique Pink Marble
Antique Pink Marble is a limestone with a brecciated appearance and uneven beige or light-green clusters embedded in an antique-pink matrix, hence its name. Of Italian origin, this beautiful stone comes in a host of different shades. Antique Pink marble commonly has whitish veins which are sometimes quite thick, giving it a painterly appearance. On a historical note, Pink Antique Marble has often been used for architectural work on private villas and churches throughout Italy and magnificent instances can be found in many ancient homes.



Glossy Lilac Marble
White lilac marble comes from Turkey and due to its distinctive veined appearance and natural beauty, it is suitable for elegant interiors. It has bold veining and a colour variation that ranges from purple to black. Some slabs may have beige nuancing within. The top surface is glossy. The surface has been enhanced with a final water-repellent treatment.



Invisible Grey
Marble of Italian origin. Like a piece of abstract art, Invisible Grey stone has impactful inimitable patterning that looks as if an inkpot has been shattered across a pure white slab. It ushers a sense of harmony and cohesiveness into your home. The eye is irresistibly drawn to trace the delicate dark-grey lines contrasted against the pure white background, and, as it does, the spirit is uplifted. A superb addition to any setting, the dramatic beauty of Invisible grey reverberates with power and will provide a perfect backdrop to meaningful memories.



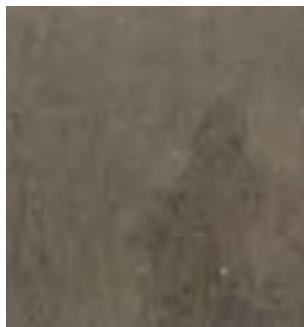
Sahara Noir
Sahara Noir is one of the most elegant marbles around. The black background with gold-and-white veins make Sahara Noir ideal for luxurious environments. Marble is formed through a metamorphosis process of sedimentary rocks. Its multiple colours stem from the presence of different minerals that overlap each other to perfection, creating shades and veins that have embellished houses and buildings of all periods and styles for centuries.



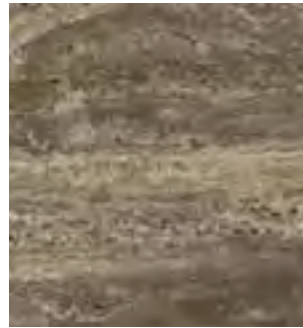
Athens Silver Cream
Athens Silver Cream is a neutral stone that is anything but plain. This attractive light-cream marble is characterised by a threadlike striated patterning that is delicate, yet distinguishing. Allows for flexible design choices.



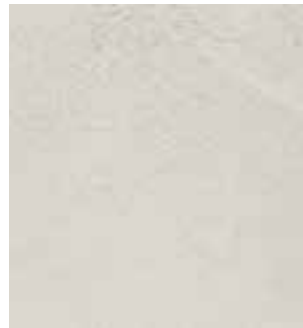
Stardust Terrazzo Stone
Is an agglomerate composed of a precious mix of marble and resin grits that are carefully selected and customised for colour and size specifically for Natuzzi. The material is then finished and smoothed. It stands apart for its skilful blend of large pieces of marble and tiny stones with an iridescent appearance for a modern exclusive feel. The edges of the top are finished with a curved bevel. This material has an extraordinary resistance to abrasion and an even colouring. A top in STARDUST-Terrazzo Stone brings to mind "A Venetian Terrace", something which the whole world recognises as being artistically and culturally superlative and representative of the area of Venice and Italian manufacturing in general. The combination of different colours and materials means that all aesthetic needs can be met, including the most modern ones.



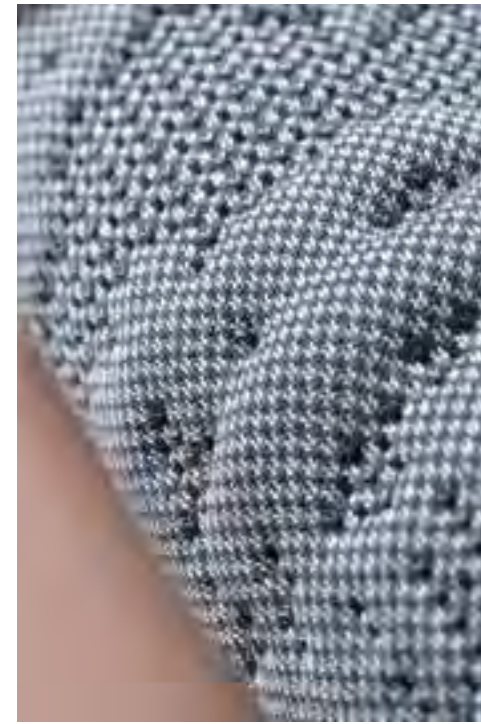
Fossena Stone
It is a limestone of North-African origin quarried in Tunisia. It is a stone with a compact and homogeneous background that is grey/brown in colour. This material stands out for its minimalist appearance, enhanced by a homogeneous and uniform structure. Flitting rust-coloured shadows and subtle ivory veins enliven the surface of the Fossena stone. The presence of some white salt or dark spots are another feature of this material. Fossena grey limestone is a sedimentary stone of marine origin and consists almost exclusively of the mineral called calcite. Small quantities may also contain dolomite, quartz and other clay minerals. These mineral or organic additives give limestone a heterogeneous colouring.



Travertine Titanium
Titanium Travertine is a special variant of the more classic travertines. Originating from Iran, it has an astoundingly attractive brown colour that can verge on various nuances of grey. This material is increasingly used in modern-looking settings and often combined with steel and concrete. Travertine belongs to the limestone family and is a sedimentary stone of continental origin. Travertine is a mono-mineral rock, meaning a rock composed of a single mineral. Its main component is calcite. It may also contain clay minerals, haematite, limonite and quartz. For this reason it can take on different colour variations. As it is quite soft, it is easy to work with and particularly suitable for interiors.



Fossena Stone
Bio-Malta (Bio-Mortar) is a coating consisting of a single-component mortar in an aqueous emulsion and natural fillers such as quartz, marble, recycled glass, terracotta powder and mother of pearl. It is a bio-compatible and eco-sustainable finish which is also odourless, non-toxic, stain-proof, non-slip and easy to maintain. It is applied entirely manually. This gives it a clearly artisanal look and an exclusive refined appearance. Highly specialised craftsmen work with care and skill on every single piece, guaranteeing outstanding quality standards.



Natuzzi comfort

Comfort is one of Natuzzi Italia's most prime concerns and the tenets of its philosophy and lifestyle approach hinge upon it. Padding provides the greatest guarantee of comfort. It must give the body support, achieving the right balance of plumpness, softness and bounciness, yet also keep its shape over time, so that everyone can enjoy a quality lounging experience even years down the line. This is the reason why Natuzzi Italia carefully selects and combines its padding materials; they are subjected to tests which mimic day-to-day usage and wear-and-tear on typical parts, such as the backrest, seat cushions, headrest, armrests and cushions.

Special Fillings

Polyurethane

Polyurethane is a rubber with several important features: it is non-allergenic, anti-bacterial, flexible and hard-wearing. Our Natuzzi polyurethane is manufactured without using freon or other potentially toxic agents.

Shape memory foam

This is a polyurethane which changes shape according to the weight it bears. What this means is that it adapts to the body, offering supreme levels of comfort.

Climalight

Anatomical, breathable and totally non-allergenic, this innovative material is a special blend of polyester microfibres which gives a plush "down-like" effect.

Down

Natuzzi's goose down filling is Class 1 (UNI EN 12934/01): non-allergenic and flame-retardant, it has undergone a variety of different sterilisation, enhancement and washing treatments which are a guarantee of the utmost hygiene.